

Scorpion Firmware Upgrade Instructions

Requirements:

- Scorpion MS46XXA/B/C/D
 - **Note:** Firmware version 2.XX will require Scorpion MS46XXA/B/C/D with option 24. Use firmware version 1.XX if option 24 is not installed. To check for option 24 select Utility → Diagnostics → Installed Options.
- PC, for downloading the firmware from the internet and creating the installation floppies.
- 2 blank floppy disks (standard Windows format)

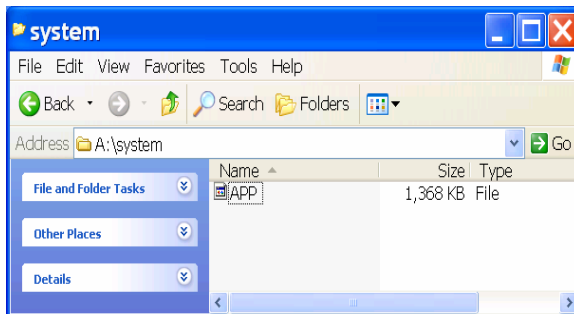
Installation Disk Setup:

The following describes the process for creating Scorpion Firmware diskettes.

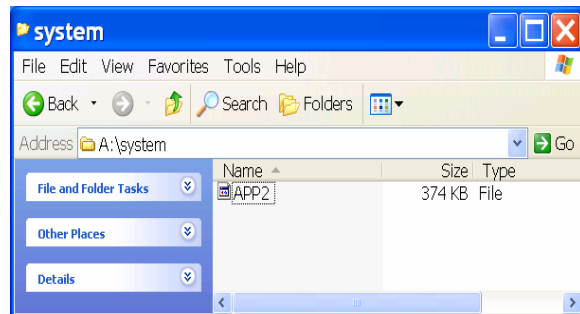
1. Download the Scorpion firmware file from the Anritsu web site.
2. Extract the files from the Firmware download file from the web into a temporary folder (directory).
3. Place a label on the first floppy disk, and write “DISK 1” on that label. Then place the floppy disk in your PC’s floppy disk drive and create a folder (sub directory) called SYSTEM.
4. Copy the APP file from the temporary folder created in step #2 into the SYSTEM folder on DISK 1
5. Place a label on the second floppy disk, and write “DISK 2” on that label. Then place the floppy disk in your PC’s floppy disk drive and create a folder (sub directory) called SYSTEM.
6. Copy the APP2 file from the temporary folder created in step #2 into the SYSTEM folder on DISK 2

Note:

APP and APP2 have no file extensions. See figure below for examples of the installation disk contents.



Disk 1 – containing APP file.



Disk 2 – containing APP2 file.

Scorpion Upgrade Process:

The following describes the process for updating the Scorpion's Firmware.

1. Turn the power to the Scorpion MS46XX/A/B/C/D off. Place DISK 1 in the Scorpion's floppy disk drive.
2. Now turn the power back on to the Scorpion.
3. When Scorpion first starts up it will look to see if the floppy disk contains new firmware and will begin loading the new version.
4. As the Scorpion loads the new firmware it will display status information on the screen, providing you with an indication of where it currently is in the upgrade process. Once Scorpion is finished loading DISK 1 it will prompt you to enter the second disk containing the APP2 file.

Initialize and Verify:

The following describes the process for resetting the Scorpion and verifying the firmware version number.

1. Verify the firmware version by pressing the following front panel key sequence:
 - Utility
 - Instrument State Parameters
 - System (the firmware version is indicated in the software area on this menu).
2. To complete the installation perform a factory reset by pressing the Default key followed by pressing the 0 key.