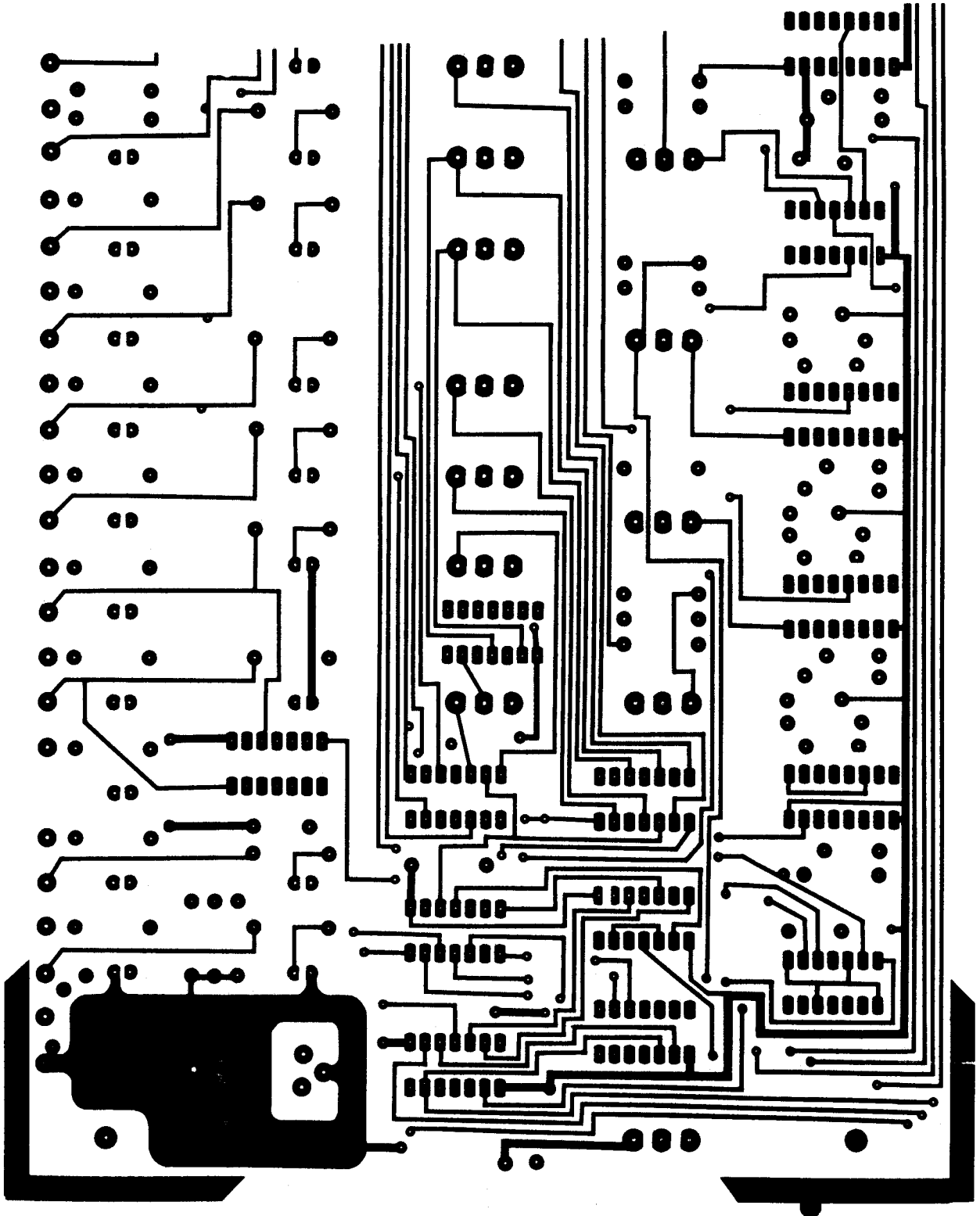
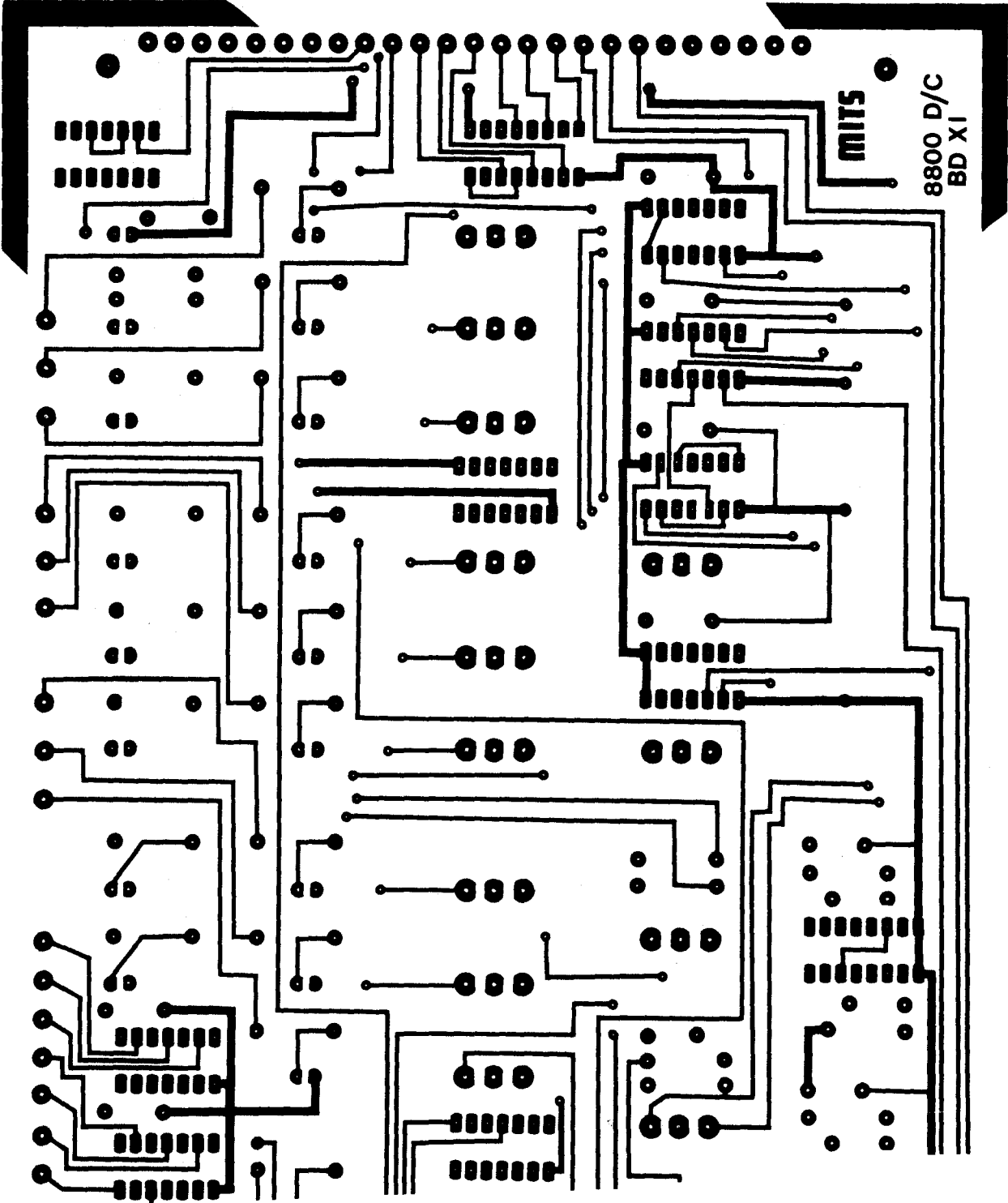


8800  
Display  
Control  
Board  
Front





8800  
Display  
Control  
Board  
Front

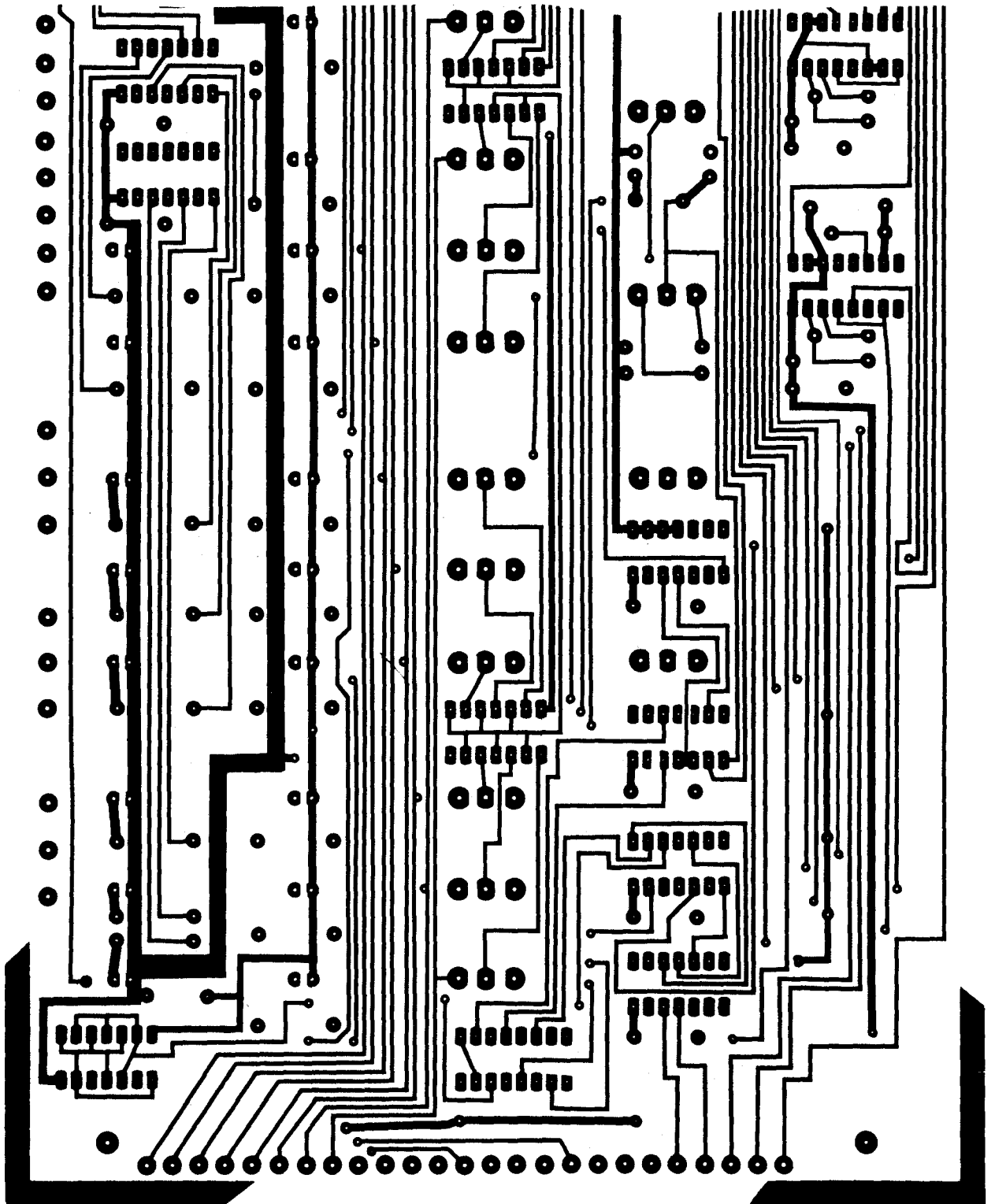
MITS

8800 D/C  
BD XI

8800

Display  
Control  
Board

Back



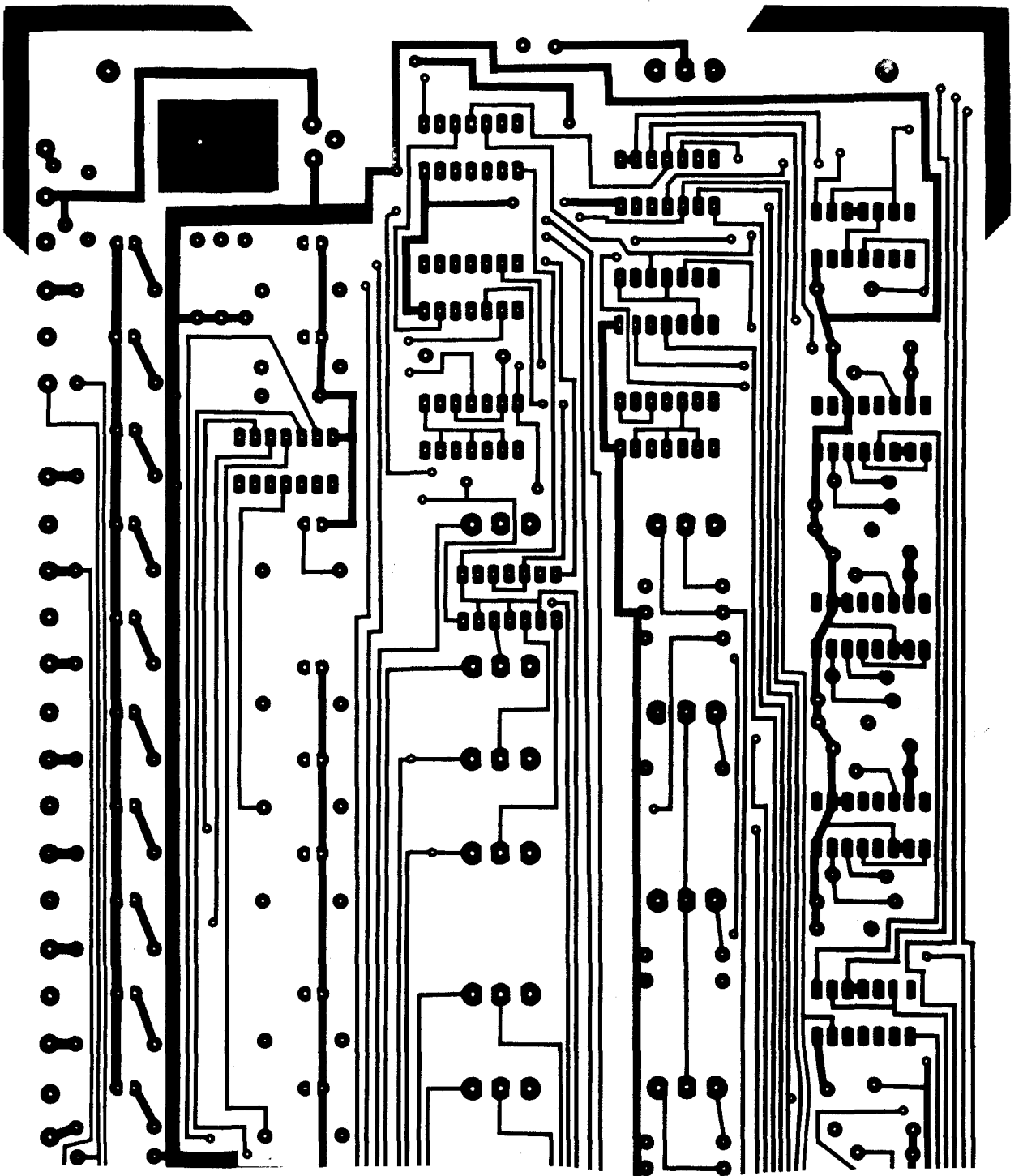
8800

Display

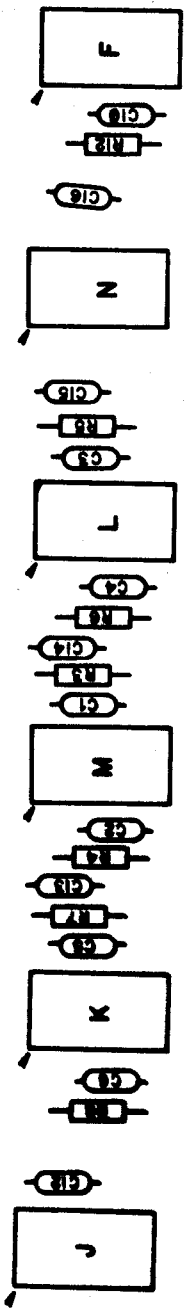
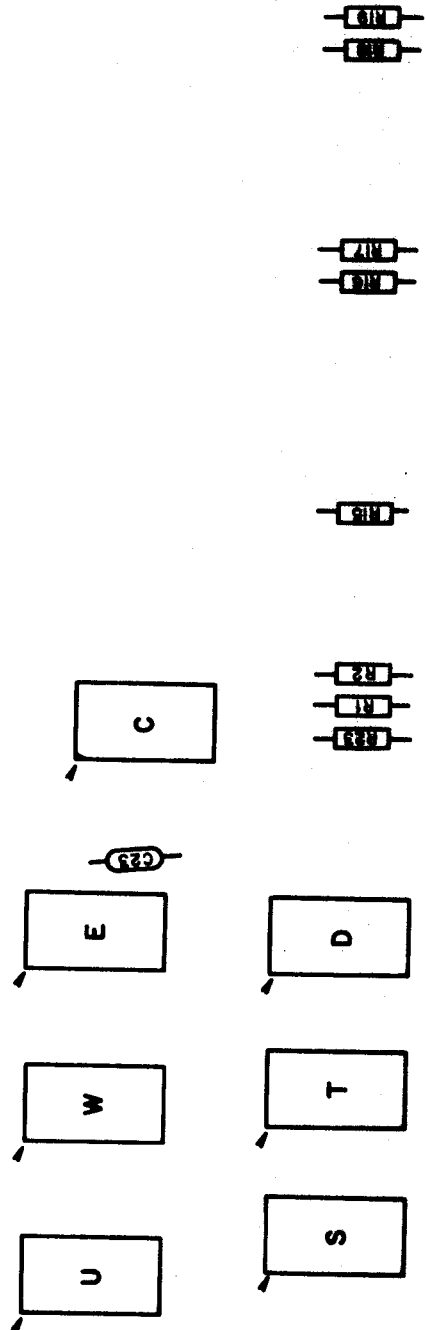
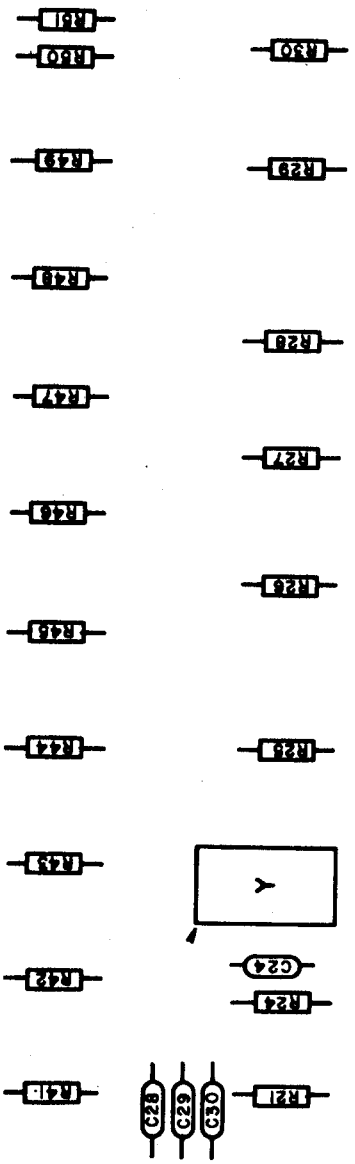
Control

Board

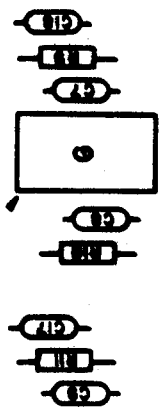
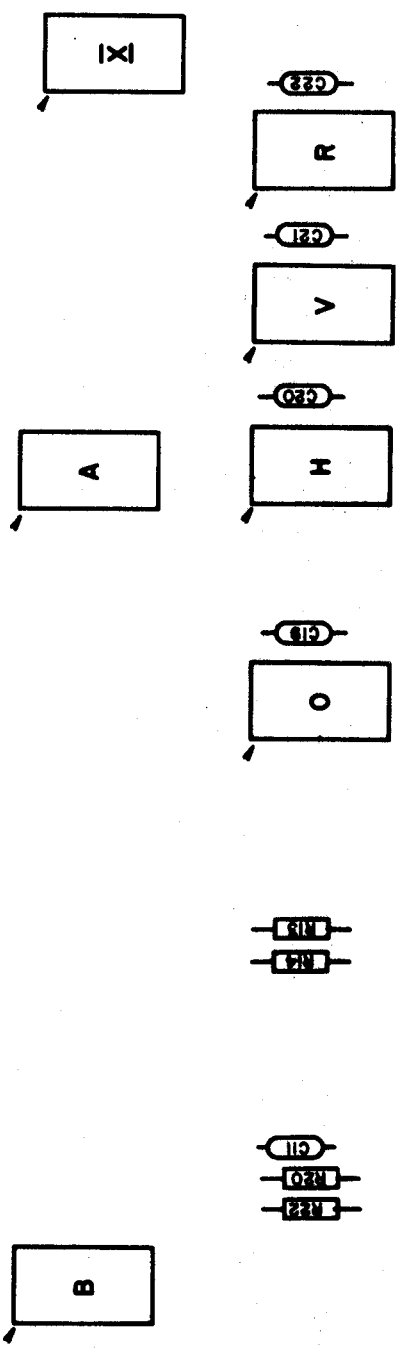
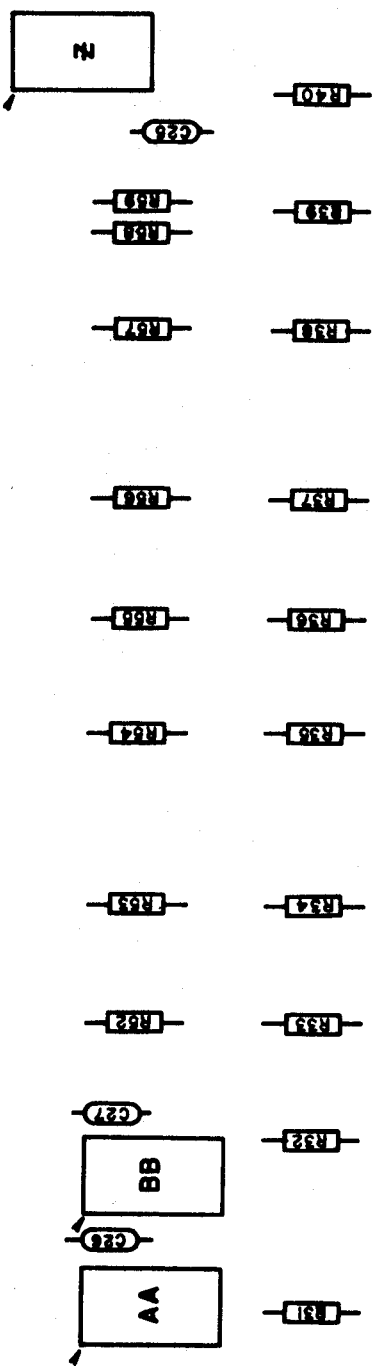
Back



8800  
Display  
Control  
Board  
Front



8800  
Display  
Control  
Board  
Front



## COMPONENT LEGEND

### D/C Board

#### IC Identification

A, B, C, D, E,	7405
F, G, K, L, M	74123
H, N, U, V	7400
J	7473
O, Y	7430
R	7402
S, T	7410
W	7404
X	8T97
Z	74L04
AA, BB	74LS04

#### Resistors

R1, R2, R9, R13, R14, R15, R16, R17, R18, R19, R22	1K
R3, R5, R7, R10	10K
R4, R6, R8, R12	2.2K
R11	20K
R20	27K
R21, & R24 - R59	220
R23	100

#### Capacitors

C6, C2, C10	.001uF
C16, C8, C11	.01uF
All Other Capacitors	.1uF

### 1K Static Memory Boards

#### IC Identification

A, C	74L04
B	7430
D, L, N	74L00
E	7404
F	7400
H, J	8T97
K	7473

#### Resistors

MA1, MA2, MB1, MB2, MC1, MC2, MD1, MD2	8101
---	------

#### All Capacitors

.1uF

### 8800 CPU Board

#### IC Identification

A, B, C, E, F, G, J, K, M	8T97
D	8212
H	7406
L, S	7404
N	7474
P	8080
R	7402
T	74123
U	7805

#### All Resistors

10K

#### All Capacitors

.1uF

## 8800 DRILLING GUIDE

0.0312 ( 1/32 )

All Integrated Circuits  
All Plated Through Holes

0.0430 ( # 57 )

All  $\frac{1}{2}$ w Resistors  
All Capacitors  
Crystal

0.0625 ( 1/16 )

All 2w Resistors  
5V Regulator (Pins)  
All Toggle Switches

0.1562 ( 5/32 )

5V Regulator (Screw)