

2315 Disk Cartridge

Restricted Distribution

This manual is intended for internal use only and may not be used by other than IBM personnel without IBM's written permission.

2315 Disk Cartridge

Restricted Distribution

This manual is intended for internal use only and may not be used by other than IBM personnel without IBM's written permission.

PREFACE

This Illustrated Parts Catalog (IPC) contains listings and illustrations of all replaceable assemblies, subassemblies, and detail parts released to Production Control on or before July 17, 1967 for the 2315 Disk Cartridge.

First Edition

Specifications contained herein are subject to change from time to time. Any such change will be reported in subsequent revisions or Field Engineering Supplements.

Copies of this and other IBM publications can be obtained through IBM Branch Offices.

A form is provided at the back of this publication for your comments.

This manual was prepared by the IBM Systems Development Division, Product Publications, Dept. 455, Bldg. 014, San Jose, California 95114. Send comments concerning the contents of this manual to this address.

GLOSSARY i
HOW TO USE ii
GROUP ASSEMBLY PARTS LIST 2
NUMERIC INDEX X-1

GLOSSARY

AR

As Required (AR) in the units per assembly column denotes that the quantity is used as required.

*ASTERISK

An asterisk in the left margin of the list indicates a part changed in the latest revision of the catalog.

ATT PT

Attaching Parts: These parts are used to attach a subassembly to an assembly. The attaching parts are listed immediately following the part to be attached.

INDENTURE

The relationship of a part to its next higher assembly is indicated by indentures. For example:

- | | | | |
|------|---|---|---|
| 1 | 2 | 3 | 4 |
| Unit | | | |
| . | Assemblies and Detail Parts of Unit | | |
| . | Attaching Parts for Assemblies & Detail Parts | | |
| . | Subassemblies | | |
| . | Attaching Parts for Subassemblies | | |
| . | Detail Parts for Subassemblies, etc. | | |

□ LOZENGE

The lozenge in the description column indicates parts not recommended for field replacement.

NP

The entry NP in the Units Per ASM column denotes the part is non-procurable and that the next higher assembly should be ordered.

NO NO.

When this indication appears in the part number column, it denotes a group of parts for which no part number has been assigned.

REF

This entry in the units per assembly column denotes an assembly which is completely assembled on a preceding illustration. Quantities for such items are found in its next higher assembly.

SIMILAR ASSEMBLIES

If two assemblies contain a majority of identical parts, they are broken down on the same list. Common parts are shown by one index number. Parts peculiar to one or the other of the assemblies are listed separately and identified by Usable On Code.

USABLE ON CODE

Part application and interchangeability is indicated by the usable on code. If this column is blank, the parts pertain to all equipment(s) covered. Two types of codes are used. The alphabetic code denotes similar assemblies and/or features: the numeric code denotes level. Refer to the beginning of each list for the explanation of the code(s).

VISUAL INDEX

The Master Visual Index, located at the front of the parts catalog, is a pictorial guide to each section of the catalog. Each section contains a Visual Index which directs you pictorially to the proper detailed figure where you can locate the desired part and part number.

HOW TO USE AN IPC

IPC ORGANIZATION

To find parts quickly, you should understand the structure of a parts catalog. First, the complete machine is drawn with major assemblies and sub-assemblies in place (Visual Index Section). Then the machine is "disassembled" into drawings of assemblies and subassemblies (Group Assembly Parts List "GAPL" Section). Thus, the sequence of figures in the catalog is the reverse of the manufacturing assembly sequence. This means that parts are not grouped according to machine functions.

One result of structuring a catalog in this manner is that some parts -- filters, brackets, belts, spring clips -- may not be where you would "logically" expect to find them in a catalog. Because of the assembly sequence, you may find these kinds of parts on a higher-level assembly. This is an important point and is why every GAPL List is cross-referenced to any higher-level or lower-level figures.

Some detailed parts are unavailable, either because they are part of an inseparable assembly (two parts welded together), or because they are part of an assembly purchased as a unit. In either case, you will need to obtain the assembly rather than the detailed part. Here again, you need to locate the part number of the next higher assembly.

Catalog Sections

A parts catalog has three sections:

1. Visual Index -- At front of catalog; shows major assemblies
2. GAPL -- A pictorial breakdown of assemblies and subassemblies
3. Numerical Index -- At back of catalog; lists all part numbers numerically

Visual Index

The Visual Index is the starting point for locating a part. Illustrations in the visual index show overall views of the machine and its major assemblies. Callouts on the illustrations lead you to detailed figures in the GAPL Section.

Group Assembly Parts List (GAPL)

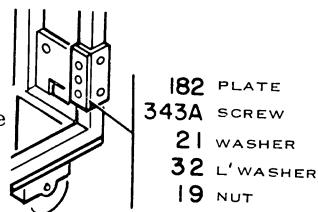
The GAPL Section consists of related Figures and Lists. The GAPL Figures break down the assemblies and subassemblies into detailed parts. The GAPL Lists describe the parts and give part numbers. Each Figure in the GAPL Section is referenced from the Visual Index Section. The relation of assemblies to subassemblies is indicated by indentation.

Numerical Index

The Numerical Index at the back of the catalog lists all parts in numeric order. Each part number is cross-referenced to related Lists and Figures in the GAPL Section. The Numerical Index permits you to locate and identify a part when only the part number is known.

Stacked Index Numbers

Index numbers are stacked only to indicate a part and its attaching hardware. The sequence of a typical stack is shown at right.



HOW TO FIND A PART

Steps 1 through 8 in the flow chart take you through the route for finding most parts. Because some parts may not be on the first GAPL Figure, you may be required to go to a lower-level or higher-level GAPL Figure to find a part.

Lower-Level Assembly

If the first GAPL Figure shows an assembly containing the required part, a figure reference in the GAPL List will indicate the proper, lower-level GAPL Figure. You should find your part in the breakdown of the assembly.

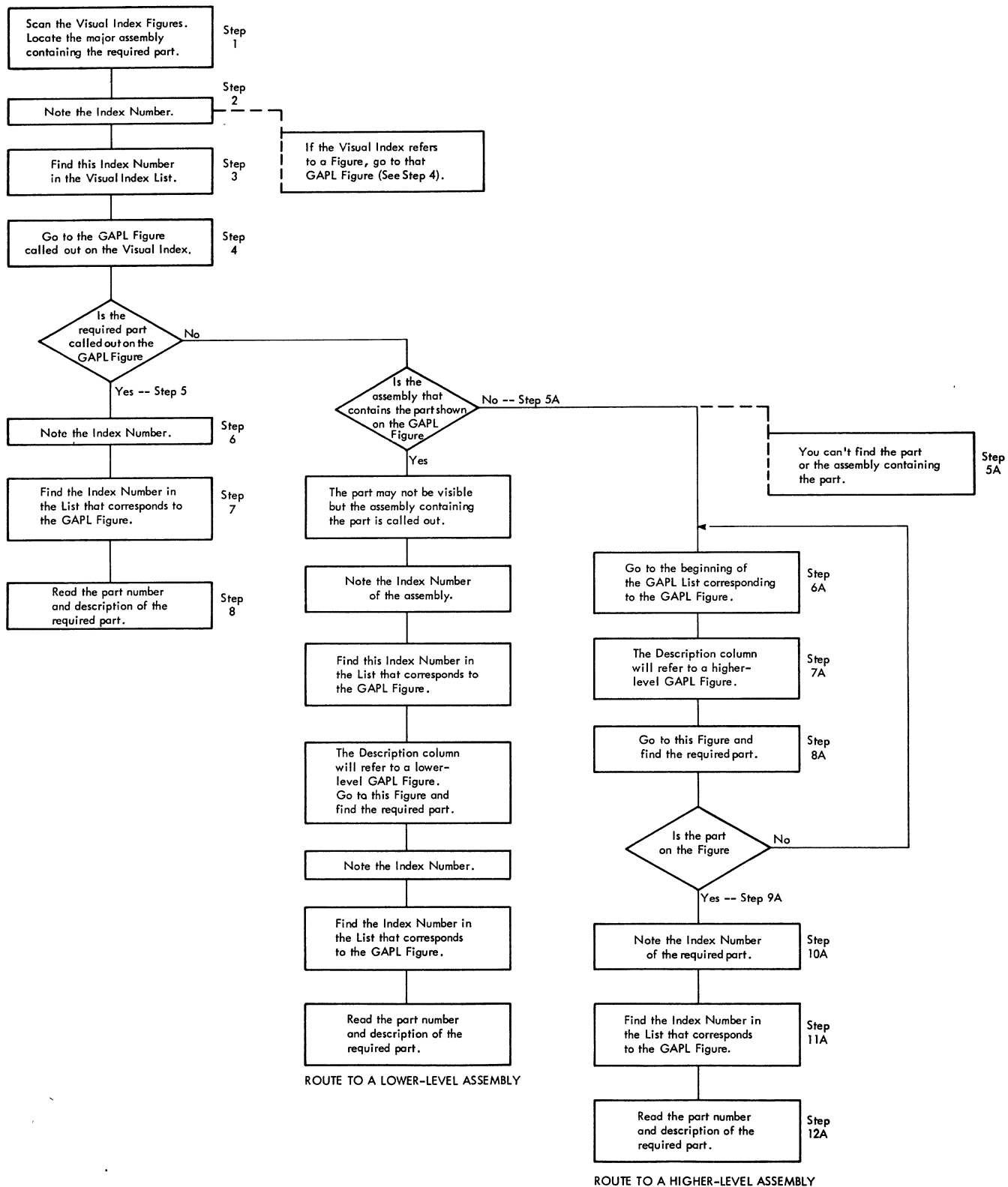
Higher-Level Assembly

The most puzzling instance is when neither the part you are looking for, nor its assembly, is found on the first GAPL Figure. Steps 5A through 12A in the flow chart show the method. Note the loop after Step 8A of the flow chart provides for more than one level of "backing up" to find a part. If you do not find your part, go to the next higher-level, as indicated in Step 7A.

New Catalogs

Catalogs issued after 1966 will contain improved methods of cross-referencing. New Visual Indexes will reference detailed figures directly, rather than through a list. Also, references to higher- or lower-level assemblies will be direct from figure to figure.

HOW TO FIND A PART



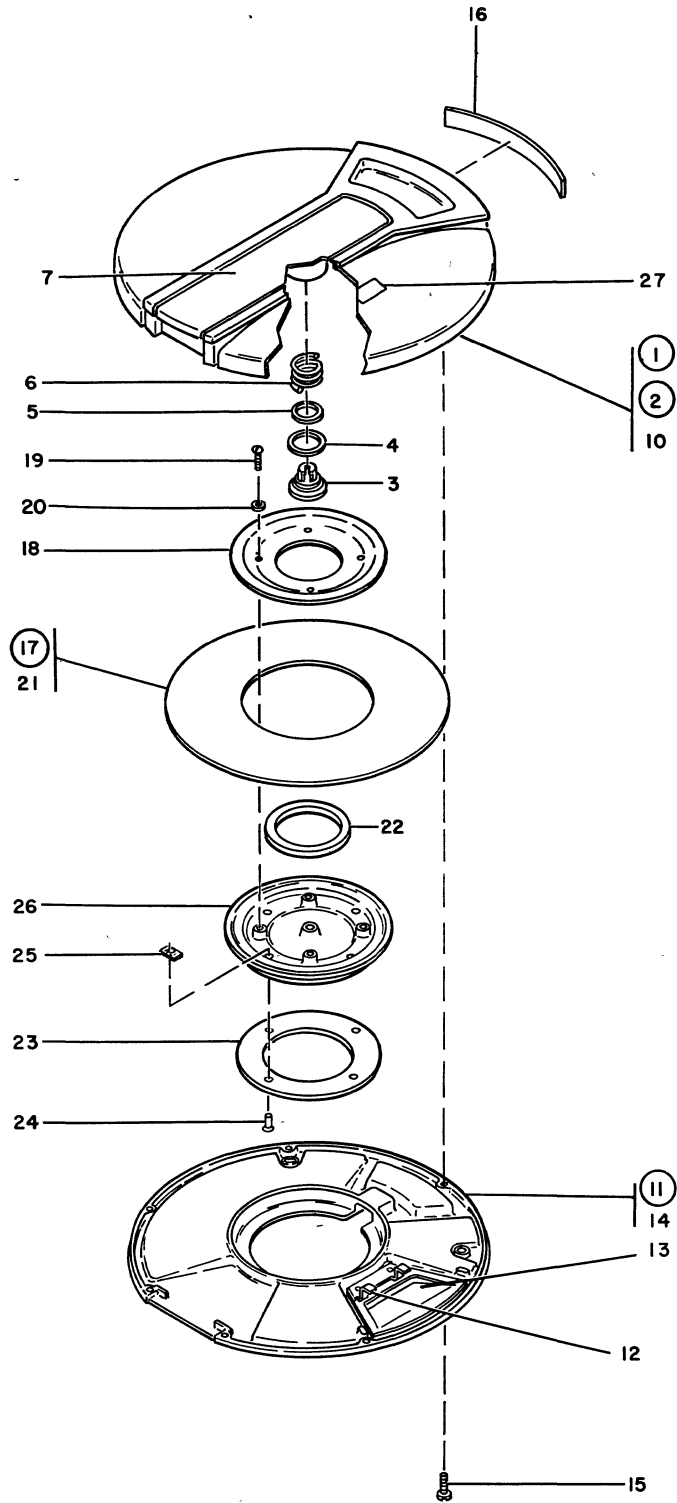


FIGURE 1. 2315 DISK CARTRIDGE ASSEMBLY. SEE LIST 1.

GROUP ASSEMBLY PARTS LIST

LIST AND INDEX NO.	PART NO.	1 2 3 4	DESCRIPTION	UNITS PER ASM.	USABLE ON CODE
			2315 DISK CARTRIDGE ASSEMBLY		
1 -	2199347		2315 DISK CARTRIDGE ASSEMBLY SEE FIGURE 1 FOR ILLUSTRATION	1	
- 1	2204110		• CARTRIDGE GROUP	1	
- 2	2199348		• • CARTRIDGE-TOP POLYCARBONATE	1	
- 3	2199352		• • • BUTTON-CARTRIDGE POLYCARBONATE	1	
- 4	2199353		• • • SEAL-NEOPRENE 0.83 ID X 1.3 OD	1	
- 5	2199354		• • • WASHER,PLAIN,FLAT- 0.865 ID X 1.05 OD	1	
- 6	2199355		• • • SPRING-COMPRESSION 0.99 OD X 2.17 LG	1	
- 7	2199359	H	• • • DOOR ASSEMBLY-RIVETED	1	
- 10	2199351		• • • CARTRIDGE-TOP POLYCARBONATE	1	
- 11	2199349		• • COVER ASSEMBLY-BOTTOM	1	
- 12	2199358	H	• • • STOP-AIR DOOR SST	1	
- 13	2199357	H	• • • DOOR-AIR SST	1	
- 14	2199356		• • • CARTRIDGE-BOTTOM POLYCARBONATE	1	
- 15	2199432		• SCREW,THREAD FORM-PAN HD 4-24 X 0.625 LG	7	
- 16	2199350		• STRIP-LABEL 1.4 X 5.33 LG	1	
- 17	2199366		• DISK ASSEMBLY	1	
- 18	2199378		• • CLAMP-DISK ADAPTER ALUMINUM 3 ID X 7 OD	1	
- 19	5257231		• • SCREW, BINDING HD 10-32 X 0.380 LG	4	ATT PT
- 20	2219193		• • WASHER,FLAT- 0.195 ID 0.44 OD 0.015 THK	4	ATT PT
- 21	2162857		• • DISK,COATED,CENTER	1	
- 22	2219192		• • SEAL-GRADE UU URETHANE 3 ID X 5.44 OD	1	
- 23	2199383		• • PLATE-ARMATURE DISK ADAPTER STL	1	
- 24	2219196		• • PIN-DISK ADAPTER MONEL 0.156 DIA	4	ATT PT
- 25	2219197		• • FASTENER-STL DISK ADAPTER 0.38 X 0.56	4	ATT PT
- 26	2199367		• • PLATE-DISK ADAPTER DIE CASTING ALUMINUM	1	
			- FOLLOWING PARTS ARE A PART OF MFI ONLY. -		
- 27	2199344		SERIAL PLATE, DOMESTIC	1	
- 27	2219076		SERIAL PLATE, WTC	1	
1	2199363		• • Cartridge Top (CF) Ref TSL 2315 TSL #3,4,5		

NUMERICAL INDEX

PART NO.	LIST AND INDEX NO.
2162857	1- 1 - 21
2199344	1- 1 - 27
2199347	1- 1 -REF
2199348	1- 1 - 2
2199349	1- 1 - 11
2199350	1- 1 - 16
2199351	1- 1 - 10
2199352	1- 1 - 13
2199353	1- 1 - 4

PART NO.	LIST AND INDEX NO.
2199354	1- 1 - 5
2199355	1- 1 - 6
2199356	1- 1 - 14
2199357	1- 1 - 13
2199358	1- 1 - 12
2199359	1- 1 - 7
2199366	1- 1 - 17
2199367	1- 1 - 26
2199378	1- 1 - 18

PART NO.	LIST AND INDEX NO.
2199383	1- 1 - 23
2199432	1- 1 - 15
2204110	1- 1 - 1
2219076	1- 1 - 27
2219192	1- 1 - 22
2219193	1- 1 - 20
2219196	1- 1 - 24
2219197	1- 1 - 25
5257231	1- 1 - 19

PART NO.	LIST AND INDEX NO.

PART NO.	LIST AND INDEX NO.

PART NO.	LIST AND INDEX NO.

READER'S COMMENT FORM

2315 IPC

Form Y26-0910-0

- Your comments, accompanied by answers to the following questions, help us produce better publications for your use. If your answer to a question is "No" or requires qualification, please explain in the space provided below. Comments and suggestions become the property of IBM.

- | | Yes | No |
|--|---|--------------------------|
| • Does this publication meet your needs? | <input type="checkbox"/> | <input type="checkbox"/> |
| • Did you find the material: | | |
| Easy to read and understand? | <input type="checkbox"/> | <input type="checkbox"/> |
| Organized for convenient use? | <input type="checkbox"/> | <input type="checkbox"/> |
| Complete? | <input type="checkbox"/> | <input type="checkbox"/> |
| Well illustrated? | <input type="checkbox"/> | <input type="checkbox"/> |
| Written for your technical level? | <input type="checkbox"/> | <input type="checkbox"/> |
| • What is your occupation? _____ | | |
| • How do you use this publication? | | |
| As an introduction to the subject? <input type="checkbox"/> | As an instructor in a class? <input type="checkbox"/> | |
| For advanced knowledge of the subject? <input type="checkbox"/> | As a student in a class? <input type="checkbox"/> | |
| For information about operating procedures? <input type="checkbox"/> | As a reference manual? <input type="checkbox"/> | |

Other _____

- Please give specific page and line references with your comments when appropriate.

COMMENTS

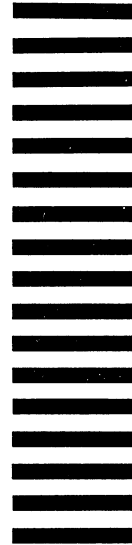
- Thank you for your cooperation. No postage necessary if mailed in the U.S.A.

fold

fold

BUSINESS REPLY MAIL
NO POSTAGE STAMP NECESSARY IF MAILED IN U. S. A.

FIRST CLASS
PERMIT NO. 2078
SAN JOSE, CALIF.



POSTAGE WILL BE PAID BY . . .

IBM Corporation
Monterey & Cottle Rds.
San Jose, California
95114

Attention: Product Publications, Dept. 455

fold

fold

5132

2315

TAB INSERT FOR FRONT COVER

Y26-0910-0

IBM 2315 Printed in U.S.A. Y26-0910-0

IBM

International Business Machines Corporation
Field Engineering Division
112 East Post Road, White Plains, N.Y. 10601