

DRAWING NO.	NO OF SHTS	PART NO.	DESCRIPTION	REVISIONS																		
		H7848 - BA	POWER SUPPLY (120V)	B1																		
		H7848 - BB	POWER SUPPLY (240V)	B1																		
			FIELD MAINTENANCE PRINT SET	A																		
B-TC-H7848-B-1	1		H7848 POWER SUPPLY (BA/BB)	A																		
D-UA-H7848-B-0	1		H7848 POWER SUPPLY (UA)	A																		
K-PL-H7848-B-DBP	1		H7848 POWER SUPPLY (PL)	A																		
A-SP-H7848-0-2	30		H7848 ENG SPEC	A																		
L-PA-3700251-0-0			PACKING PWR SUPPLY	*																		

NOTES:

REVISION HISTORY		DATE	ECO NO.	REV.																		
		9-11	INIT	A																		

THIS DRAWING AND THE SPECIFICATIONS CONTAINED HEREIN ARE CONFIDENTIAL AND PROPRIETARY. THEY ARE THE PROPERTY OF DIGITAL EQUIPMENT CORPORATION AND SHALL NOT BE REPRODUCED OR COPIED OR USED IN WHOLE OR IN PART AS THE BASIS FOR THE MANUFACTURE OR SALE OF ITEMS WITHOUT WRITTEN PERMISSION. THIS IS AN UNPUBLISHED WORK PROTECTED UNDER THE FEDERAL COPYRIGHT LAWS.

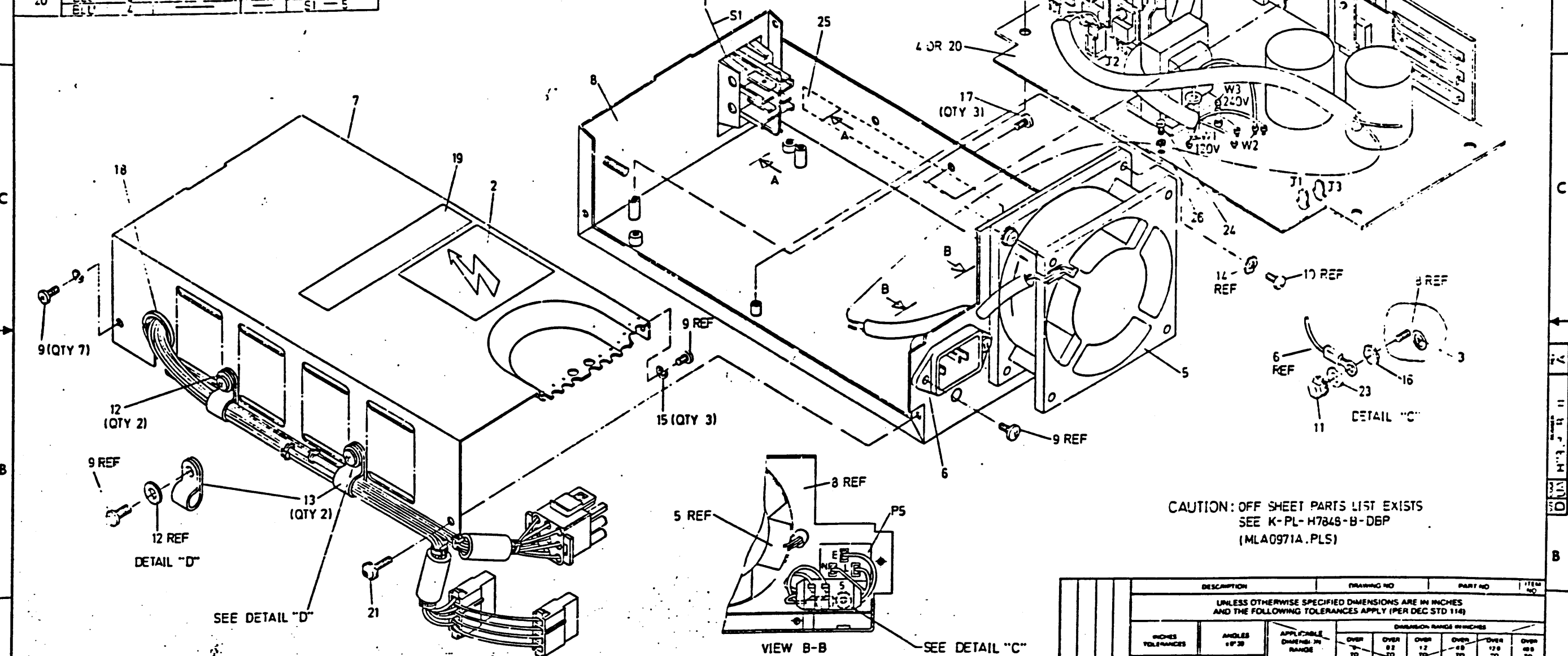
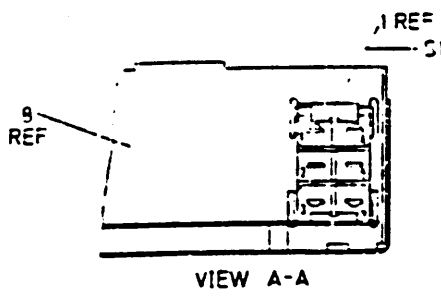


DRN. L H SO	DATE 10-20-86	TITLE	
CHK'D <i>[Signature]</i>	DATE 10-20-86	H7848 BA/BB PWR SUPP	
DES. ENG. <i>[Signature]</i>	DATE 11-28-86	DOCUMENT NUMBER	
RESP. ENG. <i>[Signature]</i>	DATE 12-28-86	SIZE B	CODE DD
MFG. ENG. <i>[Signature]</i>	DATE 1-23-87	NUMBER H7848-3	REV. A
		SHEET 1 OF 1	

BPO

THIS DRAWING AND THE INFORMATION CONTAINED HEREIN ARE UNCLASSIFIED AND UNRESTRICTED. THE INFORMATION IS TO BE RELEASED TO THE PUBLIC ON THE DATE OF THE DECLASSIFICATION AUTHORITY'S REVIEW OF THIS INFORMATION. THE DATE OF THE DECLASSIFICATION AUTHORITY'S REVIEW OF THIS INFORMATION IS TO BE DETERMINED BY THE DEPARTMENT OF COMMERCE.

ITEM NO.	COLOR	POINT FROM CONNECTION	POINT TO CONNECTION
6	BRN BLU	P5 - L P5 - N P5 - R	J1 J3 CHASSIS GND
4 OR 20	BRN BRN BLU BLU	1 2 3 4	S1 - 1 S1 - 2 S1 - 4 S1 - 5



CAUTION: OFF SHEET PARTS LIST EXISTS
SEE K-PL-H7845-B-DBP
(MLA0971A.PLS)

REVISION HISTORY	DATE	BY	INITIAL
REV			
A			

DESCRIPTION	DRAWING NO	PART NO	ITEM NO				
UNLESS OTHERWISE SPECIFIED DIMENSIONS ARE IN INCHES AND THE FOLLOWING TOLERANCES APPLY (PER DEC STD 114)							
INCHES TOLERANCES	ANGLES ± 0.25	APPLICABLE DIMENSIONS IN RANGE	DIMENSION RANGE IN INCHES				
			OVER 12 TO 30	OVER 30 TO 48	OVER 48 TO 72	OVER 72 TO 120	OVER 120 TO 480
± 0.1	SURFACE QUALITY	CHECK ONE:	± 0.010	± 0.012	± 0.015	± 0.020	
± 0.02			± 0.025	± 0.030	± 0.040		
± 0.05	✓		± 0.040	± 0.050	± 0.060	± 0.080	
QUANTITY & VARIATION	THIRD ANGLE PROJECTION	DATE	TITLE				
		L.H. SO 9-11-25	VAXSTATION 2000 POWER SUPPLY				
DO NOT SCALE DRAWING	DATE	7-11-16	DOCUMENT NUMBER				
REMOVE BURRS AND BREAK SHARP CORNERS	DATE	7-11-16	D UA H7843-B-0 A				
MATERIAL	DATE	7-23-8	SCALE				
SEE PARTS LIST		B DD-H7845-B					

LINE ITEM	TOP DOCUMENT	PART NUMBER	MIN REV	DESCRIPTION	QTY PER VAR/REV		REFERENCE DESIGNATORS
					BA B1	BB B1	
1	1	12-22355-09		SW,RKR DPST CN-NONE-OFF 16A	1	1	S1
2	2	36-10267-00		LABEL,DANGER HIGH VOLTAGE,SM30TH	1	1	
3	3	36-12680-02		LABEL,GROUND SYMBOL W/CIRCLE BLA	1	1	
4	4	D-AD-7022655-1-0		70-22655-03 B H7848 MODULE BOARD ASSY (H7848-B	1	-	
5	5	D-IA-7022656-0-0		70-22656-0M A FAN ASSY, DC	1	1	
6	6	C-IA-7024270-0-0		70-24270-01 A AC INPUT ASSY	1	1	
7	7	D-MD-7432772-0-0		74-32772-01 A COVER,POWER SUPPLY	1	1	
8	8	D-IA-7432773-0-0		74-32773-01 A CHASSIS,POWER SUPPLY	1	1	
9	9			90-06020-01 SCREW,MACH PAN PHIL 6-	7	7	
10	10			90-06022-01 SCREW,MACH PAN PHIL 6-	8	8	
11	11			90-06563-00 NUT,HEX EXT TOOTH LCKWSHR 8-32	2	2	
12	12			90-06659-00 WASHER,FLAT S/PAS	2	2	
13	13			90-07083-00 CLAMP,CABLE,SCREW MTD. 3/8	2	2	
14	14			90-07649-00 WASHER,LOCK EXTERNAL STEEL	8	8	
15	15			90-07801-00 WASHER,HELICAL SPLIT SST	3	3	
16	16			90-08072-00 WASHER,LOCK EXTERNAL STEEL	2	2	
17	17			90-10128-00 SCREW,THD RL,PAN PHIL F/METAL	3	3	
18	18			90-10353-01 BUSHING,SNAP,O/C NYLON, .625MTG	1	1	
19	19			36-22148-01 LABEL,ELEC RATINGS	1	1	
20	20	D-AD-7022655-1-0		70-22655-04 B H7848 MODULE BOARD ASSY (H7848-B	-	1	
21	21			90-10245-00 SCREW,WASH PAN TORX THD RL 6-	1	1	
22	22	A-PA-3700851-0-0		37-00851-01 PKG POWER SUPPLY H7845-B INTERPL	A/R	A/R	
23	23			90-06660-00 WASHER,FLAT SST	1	1	
24	24			90-06011-01 SCREW,MACH PAN PHIL 4-	1	1	
25	25			36-18460-05 LABEL,BAR CODE BLANK .50 X5.0	1	1	
26	26			90-06688-00 WASHER,HELICAL SPLIT SST	1	1	

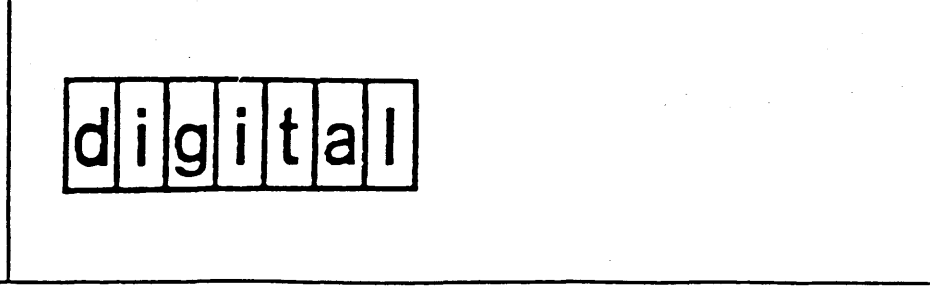
REVISION HISTORY		KPL MODULE FORMAT		SECTION A OF A		DRN: LCAMACHO/CM LEE		DIGITAL			
ENG	ECO NUMBER	REV	SECTION/VARIATION INDEX			DATE: 02-DEC-86					
---	INITIAL	A	[A] BA, BB	[M]	CHK'D: A KONG		TITLE PARTS LIST				
			[B]	[N]	DATE: 02-DEC-86		H7848 POWER SUPPLY				
			[C]	[P]	DES.ENG: K F NG						
			[D]	[Q]	DATE: 02-DEC-86		DOCUMENT NUMBER				
			[E]	[R]	RESP.ENG.: K F NG		SIZE	CODE	NUMBER	REV	
			[F]	[S]	DATE: 02-DEC-86		K	PL	H7848-B-DBP	A	
			[H]	[T]	MFG.ENG: L BROWN		RELEASE DATE: 26-JAN-87				
			[J]	[V]	DATE: 23-JAN-87		RELEASE STATUS: RELEASED				
			[K]	[W]			BASIC PART NUMBER:		ASSEMBLY NUMBER:		
			[L]	[Y]			H7848		D-UA-H7848-B-0		
							TOP DOCUMENT NUMBER:		FILE NAME:		
							B-DD-H7848-B		MLA0971A.PLS		
									EDIT #		
									7		

DRAWING NO.	NO OF SHTS	PART NO.	DESCRIPTION	REVISIONS																
				1	2	3	4	5	6	7	8	9	10	11	12					
		5416897 - 01	H7848 CIRCUIT BOARD	H2																
D-UA-5416897-0-0	1		H7848 CIRCUIT BOARD	C																
K-PL-5416897-1-DBP	3		H7848 CIRCUIT BOARD	C																
D-CS-5416897-0-1	1		H7848 CIRCUIT BOARD	C																
		5016896 - 01	H7848 CIRCUIT DRILL & ETCH	BI																
B-DD-5016896 - 0	1		H7848 CIRCUIT DRILL & ETCH	A																

NOTES:

REVISION HISTORY	DATE	ECO NO.	REV.
	10/3/86		C
		INITIAL	

THIS DRAWING AND THE SPECIFICATIONS CONTAINED HEREIN ARE CONFIDENTIAL AND PROPRIETARY. THEY ARE THE PROPERTY OF DIGITAL EQUIPMENT CORPORATION AND SHALL NOT BE REPRODUCED OR COPIED OR USED IN WHOLE OR IN PART AS THE BASIS FOR THE MANUFACTURE OR SALE OF ITEMS WITHOUT WRITTEN PERMISSION. THIS IS AN UNPUBLISHED WORK PROTECTED UNDER THE FEDERAL COPYRIGHT LAWS.



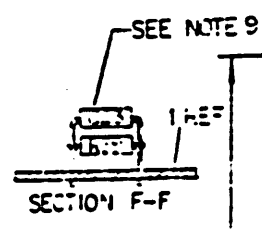
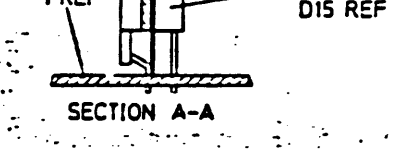
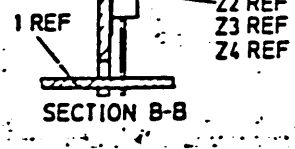
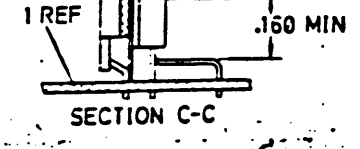
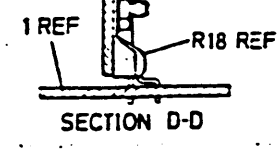
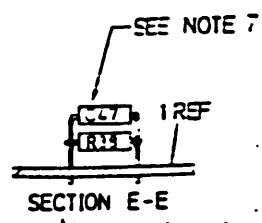
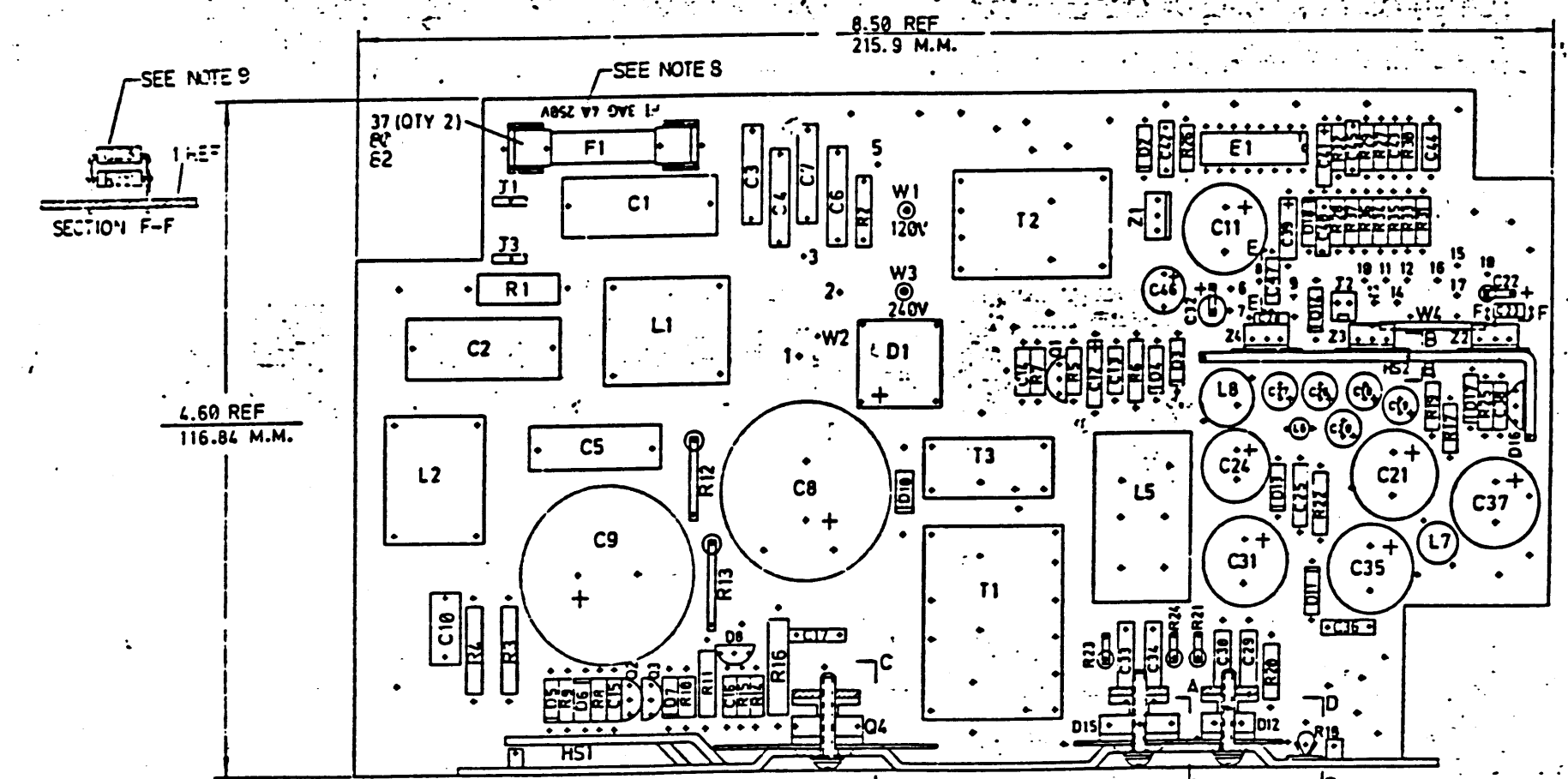
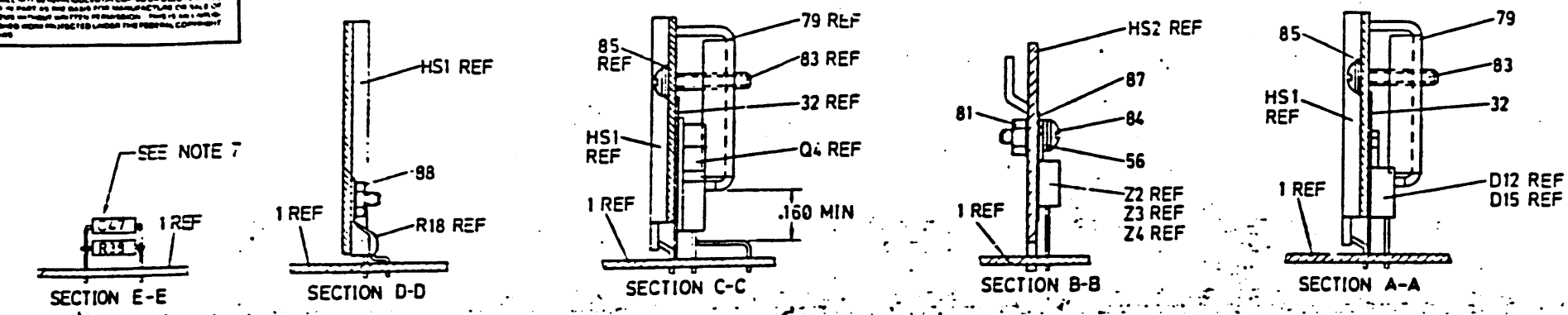
DRN. L.H.SO	DATE 1-29-86
CHK'D <i>[Signature]</i>	DATE 1-29-86
DES ENG. <i>[Signature]</i>	DATE 1-29-86
RESP ENG. <i>[Signature]</i>	DATE 1-29-86
MFG. ENG. <i>[Signature]</i>	DATE 1/15/86

TITLE		H7848 CIRCUIT BOARD		
DOCUMENT NUMBER				
SIZE	CODE	NUMBER	REV	
B	DD	5416897 - 0	C	
SHEET 1 OF 1				

U-0-4689175

THIS DRAWING AND THE SPECIFICATIONS CONTAINED HEREIN ARE THE PROPERTY OF DIGITAL EQUIPMENT CORPORATION AND ARE TO BE USED BY THE BUYER FOR THE MANUFACTURE OF THE BOARD SHOWN HEREON AND FOR THE REPAIR OF THE BOARD SHOWN HEREON. THIS IS NOT TO BE REPRODUCED OR TRANSMITTED IN ANY FORM OR BY ANY MEANS, ELECTRONIC OR MECHANICAL, INCLUDING PHOTOCOPYING, RECORDING, OR BY ANY INFORMATION STORAGE AND RETRIEVAL SYSTEM, WITHOUT PERMISSION IN WRITING FROM DIGITAL EQUIPMENT CORPORATION.

- NOTES:
1. THE BOARD MEETS UL REQUIREMENTS FOR P2WR.
 2. TORQUE ITEM 84 TO 4-5 IN-LBS.
 3. TORQUE ITEM 83 TO 5 IN-LBS.
 4. FOR D1 (ITEM 28), OFF BOARD .5 INCH MINIMUM.
 5. FOR R16 (ITEM 55), NOT OFF BOARD SOLDERED.
 6. R12, R13, R21, R23 & R24 SHOULD BE VERTICALLY MOUNTED.
 7. CONNECT C47 PARALLEL TO R35 AS SHOWN.
 8. ADD PERMANENT FUSE MARKING WITH RUBBER STAMP AND INDELIBLE INK ON F13 ADJACENT TO FUSE "F1 3AG 4A 250V"
 9. CONNECT C23 PARALLEL TO R39 AS SHOWN.



4.60 REF
116.84 M.M.

8.50 REF
215.9 M.M.

CAUTION: OFF SHEET PARTS LIST EXISTS
SEE K-PL-5416897-0-SEP
(GH826C.)

REVISIONS	DATE	BY	INITIAL
1			

DESIGNED BY	L.H. SO	DATE	5-6-86	TITLE	digital
DRAWN BY		DATE	5-13-86		
CHECKED BY		DATE	5-13-86		
APPROVED BY		DATE	5-13-86		
PROJECT	B-DD-5416897-0			DOCUMENT NUMBER	D UA 5416897-0-0 C
					15FD

LINE	ITEM	TOP DOCUMENT	PART NUMBER	MIN REV	DESCRIPTION	QTY	PER VAR/REV	REFERENCE DESIGNATORS
						O1		
						H2		
1	1	B-DD-5016896-0	50-16896-01	B	CIRCUIT DRILL AND ETCH BOARD	1		
2	2		10-01776-00	A	1.0 MFD 35V +/-10% SOL	2		C12,C22
3	3		10-02627-00	A	2.2 MFD 20V +/-10% SOL	2		C39,C41
4	4		10-10274-00	K	0.22 MFD 50V +80/-20% Z5U C	5		C13,C23,C28,C36,C45
5	5		10-05116-00	B	3300 PFD 200V +/-10% MYLAR	2		C29,C30
6	6		10-12312-01	B	0.47 MFD 50V +80/-20% Z5U C	1		C40
7	7		10-13466-10	W	3300 PFD 50V +/- 5% NPO C	5		C14,C25,C33,C34,C44
8	8		10-18000-04	E	10 MFD 35V +50/-20% ALU	5		C18-C20,C26,C27
9	9		10-18000-11	E	330 MFD 25V +50/-20% ALU	1		C24
10	10		10-24375-01	A	2200 PFD 250VAC +/-20% LIN	4		C3,C4,C6,C7
11	11		10-13466-30	W	560 PFD 50V +/- 5% NPO C	1		C16
12	12		10-13466-14	W	82 PFD 50V +/- 5% NPO C	1		C43
13	13		10-13466-22	W	0.10 MFD 50V +80/-20% Z5U C	2		C15,C38
14	14		10-14139-00		2200 PFD 600V +/-10% POLYP	1		C10
15	15		10-14169-00	A	1000 PFD 100V +/- 1% 200PP	1		C42
16	16		10-24317-02	A	0.47 MFD 250VAC +/-20% LIN	1		C1
17	17		10-26365-01	A	300 MFD 250V +/-20% ALU	2		C8,C9
18	18		10-19537-01	A	1000 MFD 35V +50/-10% ALU	5		C11,C21,C31,C35,C37
19	19		10-24317-01	A	0.33 MFD 250VAC +/-20% LIN	1		C2
20	20		10-24317-03	A	0.22 MFD 250VAC +/-20% LIN	1		C5
21	21		10-24263-02	A	330 PFD 1000V +/-10%	1		C17
22	22		11-02808-00	A	VZ= 5.6 5% 400 MW 1N752A	1		D17
23	23		11-10836-00	B	VZ= 12.0 5% 400 MW 1N759A	1		D5
24	24		11-10968-00	A	SCR PIV= 100 IO= .80A 2N5062	2		D8,D16
25	25		11-12595-00	A	PIV= 50 IO= 1.00A AXIAL	5		D2-D4,D7,D18
26	26		11-25363-04	A	RECT,ULTRA FAST PIV=200 IO= 2.0A	1		D11
27	27		11-15112-00	A	RECT,ULTRA FAST PIV= 800 IO= 1.0	2		D6,D10
28	28		11-18205-00	A	PIV= 420 IO= 6.00A	1		D1
29	29		11-20323-01	A	RECT,ULTRA FAST PIV= 100 IO=16.0	1		D12
30	30		11-25375-02	A	RECT,ULTRA FAST PIV= 100 IO= 1.0	2		D13,D14
31	31		11-22399-01	A	30 AMP SCHOTTKY RECTIFIER TO 218	1		D15
32	32		12-25016-02	A	RUBBER,SILICONE,THERMAL COND 42M	2		

REVISION HISTORY		KPL MODULE FORMAT		SECTION A OF A		DRN: LCAMACHO/CM LEE		DIGITAL	
ENG	ECO NUMBER	REV	SECTION/VARIATION INDEX		CHK'D:	TITLE		PARTS LIST	
---	INITIAL	C	[A]	01	[M]	A KONG	H7848 CIRCUIT BRD		
			[B]		[N]	DATE: 25-JUL-86	DOCUMENT NUMBER		
			[C]		[P]	DES.ENG: K F NG	SIZE	CODE	NUMBER
			[D]		[Q]	DATE: 25-JUL-86	K	PL	5416897-0-DBP
			[E]		[R]	RESP.ENG.: K F NG			REV
			[F]		[S]	DATE: 25-JUL-86			C
			[H]		[T]	MFG.ENG: L BROWN	RELEASE DATE: 06-NOV-86		
			[J]		[V]	DATE: 11-SEP-86	RELEASE STATUS: RELEASED		
			[K]		[W]				
			[L]		[Y]				
BASIC PART NUMBER:		ASSEMBLY NUMBER:		TOP DOCUMENT NUMBER:		FILE NAME:		EDIT #	
5416897		D-UA-5416897-0-0		B-DD-5416897-0		GH826C.PLS		36	

"THIS DRAWING AND THE SPECIFICATIONS CONTAINED HEREIN ARE CONFIDENTIAL AND PROPRIETARY. THEY ARE THE PROPERTY OF DIGITAL EQUIPMENT CORPORATION AND SHALL NOT BE REPRODUCED OR COPIED OR USED IN WHOLE OR IN PART AS THE BASIS FOR THE MANUFACTURE OR SALE OF ITEMS WITHOUT WRITTEN PERMISSION. THIS IS AN UNPUBLISHED WORK PROTECTED UNDER THE FEDERAL COPYRIGHT LAWS."

LINE	ITEM	TOP DOCUMENT	PART NUMBER	MIN REV	DESCRIPTION	QTY	PER VAR/REV	REFERENCE DESIGNATORS
						01		
						H2		
33	33	D-MD-7432774-0-0	74-32774-01	A	PLATE,HEAT DIFFUSER	1		HS2
34	34		12-24261-01	A	PCB HEADER PIN .12500 TIN	2		W1,W3
35	35	D-MD-7431836-0-0	74-31836-02	A	PLATE,DIFFUSER,WITH STUD	1		HS1
36	36		12-24262-01	A	PCB HEADER 02PIN(1X02).098CC STR	1		J2
37	37		90-09513-03	J	FUSECLIP	2		
38	38		12-24484-01	A	TERM,TAB .187TAB	2		J1,J3
39	39		13-00168-00	A	10.0 .50 W 5.0 % CF	4		R20,R22-R24
40	40		13-00229-00	A	100.0 .25 W 5.0 % CF	1		R25
41	41		13-00444-00	A	3.90 K .25 W 5.0 % CF	1		R14
42	42		13-00426-00	A	2.70 K .25 W 5.0 % CF	1		R5
43	43		13-00443-00	A	3.90 K .50 W 5.0 % CF	1		R11
44	44		13-01317-00	A	10.0 .25 W 5.0 % CF	1		R7
45	45		13-01425-00	A	300.0 .25 W 5.0 % CF	2		R8,R9
46	46		13-02336-00	A	39.0 .50 W 5.0 % CF	1		R6
47	47		13-04839-00	A	51.0 K .25 W 5.0 % CF	2		R27,R31
48	48		13-04870-00	A	6.81 K .25 W 1.0 % RN55D-F10	1		R26
49	49		13-12626-00	A	2.49 K .25 W 1.0 % RN55D-F10	5		R28,R33-R35,R37
50	50		13-12921-00	A	649.0 .25 W 1.0 % RN55D-F10	1		R36
51	51		13-12930-00	A	5.10 K .25 W 5.0 % CF	3		R29,R30,R32
52	52		13-14270-01	C	THERMISTOR NTC 5.0 25%	1		R2
53	53		13-19470-53	A	100.0 K 1.0 W 5.0 % M.OXIDE	2		R3,R4
54	54		13-19470-88	A	330.0 K 1.0 W 5.0 % M.OXIDE	1		R1
55	55		13-24416-01	A	1.0 2.0 W 2.0 % M.OXIDE	1		R16
56	56		13-00365-00	A	1.0 K .25 W 5.0 % CF	3		R10,R15,R17
57	57		13-19471-74	A	24.0 K 2.0 W 5.0 % M.OXIDE	2		R12,R13
58	58		13-00391-00	A	1.50 K .25 W 5.0 % CF	1		R19
59	59		13-19255-04	A	10.0 1.0 W 5.0 % M.OXIDE	1		R21
60	60		13-25123-08	A	THERMISTOR PTC 100 MAX 60C	1		R18
61	61		13-20644-01	A	5.10 M .25 W 5.0 % CF	1		R38
62	62		15-13490-00		2N 4403 PNP 350MW SI-40 30	3		Q1-Q3
63	63		15-24264-01	A	VMOS FET 800V 5A N CHNNL	1		Q4
64	64		16-20807-01	A	1.0 UH 10A	1		L7
65	65		16-24599-02	A	*** THIS ITEM IS NOT USED ***	-		
66	66		16-26142-01	A	CHOKE,EMI FILTERING12MH 1.9A RMS	2		L1,L2
67	67		16-25559-01	A	XFMR,POWER,HIGH FREQ 100KHZ	1		T1
68	68		16-24445-01	A	XFMR,POWER 115/230V 47-63HZ W/TH	1		T2
69	69		16-24289-01	A	XFMR,BASE DRIVE,100KHZ	1		T3
70	70		16-25632-01	A	INDUCTOR,HIGH FREQUENCY,COUPLED	1		L5
71	71		16-21943-01	A	CHOKE,COIL,250UH+10%	1		L6
72	72		19-14437-00		7905 VOLT REG,FIX -5V	1		Z3
73	73		19-25554-01	A	VOLT REG +9V	1		Z4
74	74		19-12048-05	M	7812 VOLT REG,FIX +12V	1		Z1
75	75		19-14517-01	B	7912 VOLT REG,FIX -12V	1		Z2
76	76		19-16819-00	B	3527A MODULATOR,REGULATING	1		E1
77	77	A-PS-3624585-0-0			*** THIS ITEM IS NOT USED ***	-		
78	78		49-01303-00		*** THIS ITEM IS NOT USED ***	-		
79	79	C-MD-7432652-0-0	74-32652-01	A	DIFFUSER,CLIP	3		
80	80		12-24259-01	A	COVER,FUSE	1		
81	81		90-06557-00	A	NUT,HEX EXT TOOTH LCKWSHR 4-40	3		
82	82		90-07219-02	A	FUSE 3AG 4.0 A 250V NORM-BLOW	1		F1

LINE	ITEM	TOP DOCUMENT	PART NUMBER	MIN REV	DESCRIPTION	QTY	PER VAR/REV	REFERENCE DESIGNATORS
						01		
						H2		
83	83		90-06015-01	A	SCREW, MACH PAN PHIL	4-	3	
84	84		90-06010-01	A	SCREW, MACH PAN PHIL	4-	3	
85	85		90-06632-00	A	WASHER, LOCK INTERNAL STEEL		3	
86	86		90-10057-00		WASHER, SHOULDER INSULATG PPS		3	
87	87		12-13071-05	K	INSULATOR, RUBBER SILICONE		3	
88	88		90-06560-00	A	NUT, HEX EXT TOOTH LCKWSHR	6-32	1	
89	89		10-04813-00	A	10 MFD 20V +/-10% SOL		1	C32
90	90		10-18000-17	E	470 MFD 25V +50/-20% ALU		1	C46
91	91		16-24450-01	A	2.7 UH FILTER HIGH FREQ 3A		1	L8
92	92		10-24263-01	A	1000 PFD 1000V +/-10%		1	C47
93	93		91-07688-55		WIRE(WRAP) 24AWG KYNAR UL13		1	W4
94	94		10-17539-02		*** THIS ITEM IS NOT USED ***		-	
95	95		16-27286-01	A	*** THIS ITEM IS NOT USED ***		-	
96	96		16-27285-01	A	*** THIS ITEM IS NOT USED ***		-	
97	97		13-03177-00		2.40 K .25 W 5.0 % CF		1	R39

D	I	G	I	T	A	L	TITLE		SECTION A OF A	SIZE	CODE	DOCUMENT NUMBER	REV
							H7848 CIRCUIT BRD			K	PL	5416897-0-DBP	C

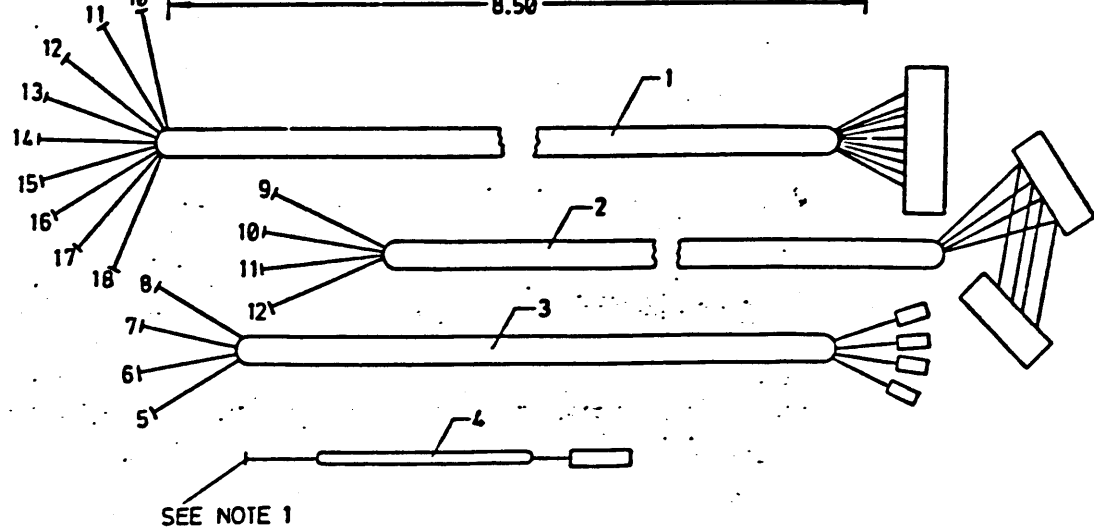
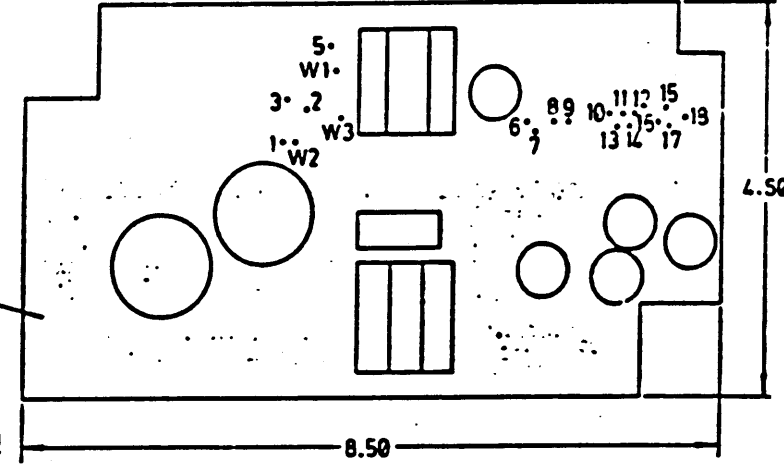
11-0-55-026-117

THIS DRAWING AND THE PARTS LIST THEREON ARE THE PROPERTY OF THE UNITED STATES GOVERNMENT AND ARE LOANED TO YOU. IT IS TO BE USED ONLY FOR THE PURPOSES AUTHORIZED BY THE CONTRACT UNDER WHICH IT IS LOANED. IT IS TO BE RETURNED TO THE OFFICE OF ORIGIN UPON COMPLETION OF THE PROJECT FOR WHICH IT IS LOANED.

ITEM NO.	DESCRIPTION		FROM		TO		REMARKS
	AWG	COLOR	CONNECTION	TERM	CONNECTION	TERM	
1	18	BLK	18	---	BD-11	---	
		BLK	17	---	BD-12	---	
		BLK	16	---	BD-10	---	
		YEL	15	---	BD-13	---	
		RED	14	---	BD-15	---	
		RED	13	---	BD-16	---	
		BRN	12	---	BD-6	---	
		WHT	11	---	BD-8	---	
2		GY	10	---	BD-9	---	
		RED	9	---	BD-17	---	
		BLK	10	---	BD-14	---	
3		BLK	11	---	BD-13	---	
		ORN	12	---	BD-7	---	
		BRN	8	---	BD-2	---	
4		BRN	7	---	BD-5	---	
		BLU	6	---	BD-3	---	
		BLU	5	---	BD-1	---	
	BLU	W2	---	W1	---	120V	
	18	BLU	W2	---	W3	---	240V

LEGEND		
PART NO.	REV	VARIATION
7022655-31	01	120V (AA)
7022655-31	01	240V (AB)

NOTES:
1. TO BE SOLDERED AT W2 LOCATIONS.



CAUTION: OFF SHEET PARTS LIST EXISTS
SEE K-PL-7022655-0-DBP
(GH-10FC)

DESCRIPTION	DRAWING NO	PART NO	ITEM NO
UNLESS OTHERWISE SPECIFIED DIMENSIONS ARE IN INCHES AND THE FOLLOWING TOLERANCES APPLY (PER DEC STD 114)			
INCHES TOLERANCES	ANGLES ±0°30'	APPLICABLE DIMENSION RANGE	
		OVER TO	OVER TO
±.015	SURFACE QUALITY	0.000 - 0.062	0.062 - 0.125
±.005		0.125 - 0.250	0.250 - 0.500
±.003	✓	0.500 - 0.750	0.750 - 1.000
±.002	✓	1.000 - 1.500	1.500 - 2.000
±.001	✓	2.000 - 3.000	3.000 - 4.000
±.0005	✓	4.000 - 6.000	6.000 - 10.000
QUANTITY & VARIATION	THIRD ANGLE PROJECTION	DATE	TITLE
1	L. H. SO	11-28-85	H7343 MODULE BOARD ASSY
DO NOT SCALE DRAWING	DATE	11-29-85	
REMOVE BURRS AND BREAK SHARP CORNERS	DATE	11-29-85	
MATERIAL	DATE	11-29-85	
SEE PARTS LIST	DATE	11-29-85	
FINISH	DATE	11-29-85	
D AD 7022655-0-0		DOCUMENT NUMBER	
D AD 7022655-0-0		D AD 7022655-0-0	

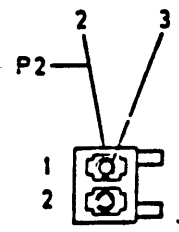
REV	ECO NUMBER	DATE	INITIAL
1		11/29/85	LHS

7022655-0-0

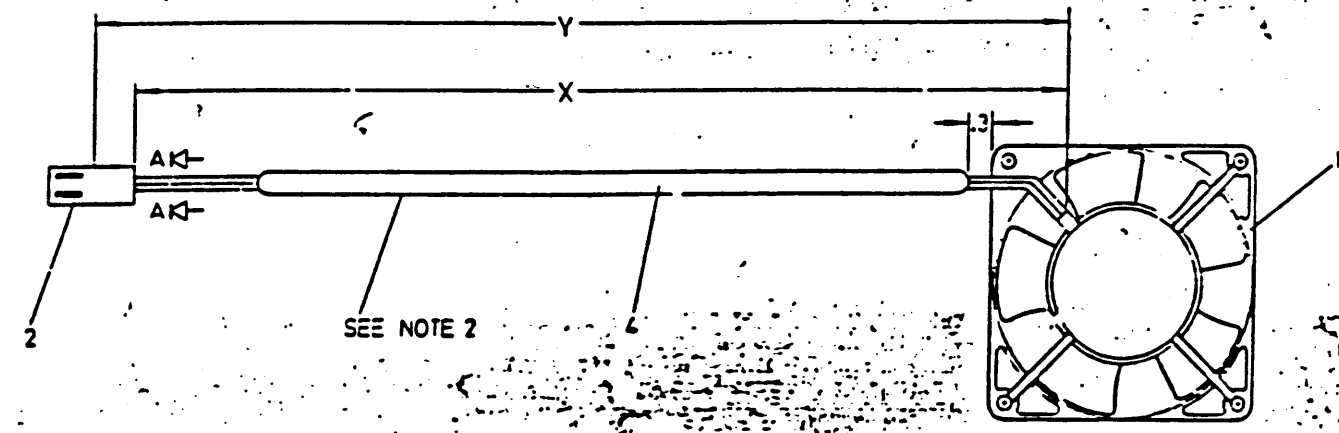
WIRE TABLE					
ITEM NO.	AWG	COLOR	CONN WITH	TO	CONN WITH
1	24	RED	P2-1	3	FAN
		BLK	P2-2	3	FAN

LEGEND			
NUMBER	REV	DIM "X" VARIATION	DIM "Y" (PRECUT) REF
7022656-0M	A1	11 ± .5 INCHES	12 ± .5 INCHES

- NOTES:
- UNLESS OTHERWISE NOTED ALL LENGTHS ARE IN INCHES.
 - INNER SHRINK TUBING ITEM #5, AND OUTER P/C TUBING ITEM #4, ARE TO BE ASSEMBLED OVER LEADS BOTH ARE 8 INCHES IN LENGTH. DO NOT STRIP W.
 - ALL WIRE ENDS STRIPPED BACK .12.



VIEW A-A
SCALE 4/1



CAUTION: OFF SHEET PARTS LIST EXISTS.
SEE K-PL-7022656-0-DBP
(GH406A.)

DESCRIPTION	DRAWING NO	PART NO	ITEM NO
UNLESS OTHERWISE SPECIFIED DIMENSIONS ARE IN INCHES AND THE FOLLOWING TOLERANCES APPLY (PER DEC STD 114)			
INCHES TOLERANCES	ANGLES ± 30°	APPLICABLE DIMENSION RANGE	OVER 0.1
			OVER 0.2
SURFACE QUALITY	MICROFINISH	DIMENSION RANGE IN INCHES	OVER 0.125
			OVER 0.25
QUANTITY & VARIATION	THIRD ANGLE PROJECTION	DATE	TITLE
		L. H. SO 11-28-95	FAN ASSY. DC
DO NOT SCALE DRAWING	DATE	11-28-95	
REMOVE BURRS AND BREAK SHARP CORNERS	DATE	11/28/95	
MATERIAL	DATE	11/28/95	
SEE PARTS LIST	DATE	11/28/95	
FRESH NONE	TOP REC NO	D-1A-7022656-0-0	SCALE
	DOC NUMBER	D 1A 7022656-0-0	REV A

REV	DATE	BY	CHKD
1	11/28/95		

D 1A 7022656-0-0

7023689-0-0
REV A

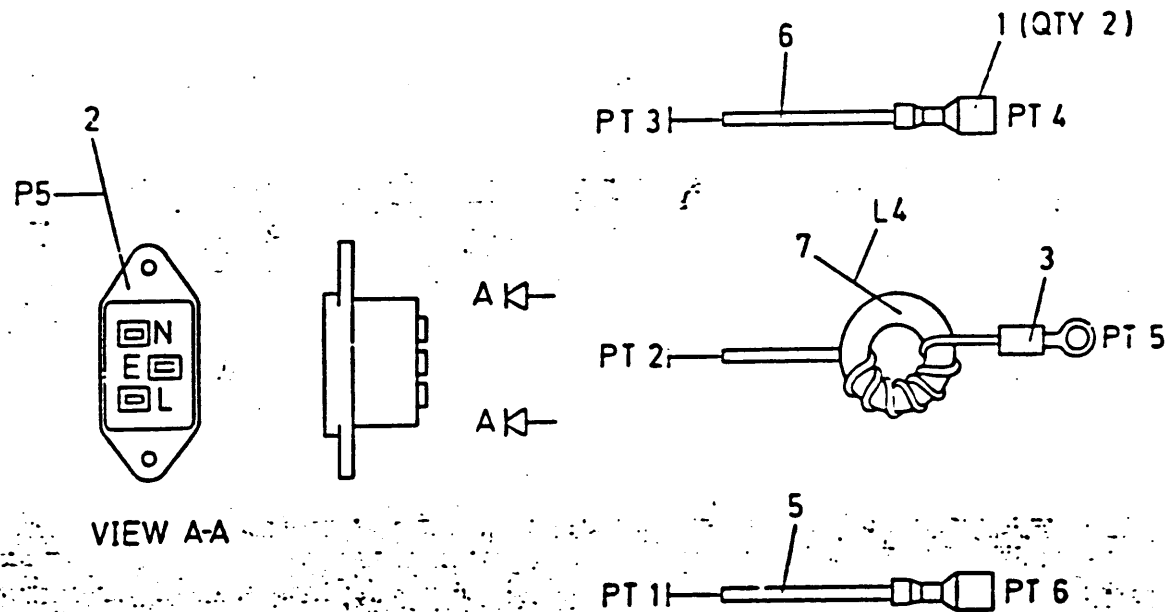
THIS DRAWING AND THE SPECIFICATIONS CONTAINED HEREIN ARE CONFIDENTIAL AND PROPRIETARY. THEY ARE THE PROPERTY OF DIGITAL EQUIPMENT CORPORATION AND SHALL NOT BE REPRODUCED OR COPIED OR USED IN WHOLE OR IN PART AS THE BASIS FOR MANUFACTURE OR SALE OF ITEMS WITHOUT WRITTEN PERMISSION. THIS IS AN UNPUBLISHED WORK PROTECTED UNDER THE FEDERAL COPYRIGHT LAWS.

LEGEND		
PART NO.	REV	VARIATION
7023689-01	A1	AS SHOWN

NOTES:

- UNLESS OTHERWISE NOTED ALL LENGTHS ARE IN INCHES.
- WITH SHRINK TUBING ITEM #2 AT BREAKOUT POINT 1, 2 & 3 ALL ARE .5 INCH IN LENGTH.

RUN NO.	ITEM NO.	DESCRIPTION			FROM				TO				REMARKS
		AWG	COLOR	LENGTH	POINT	CONNECTION	STRIP	WITH	POINT	CONNECTION	STRIP	WITH	
1	5	13	BRN	2	1	P5 — L	.32	SOLDER	6	=====	.25	1	NOTE 2
2	7	—	—	—	2	P5 — E	.32	SOLDER	5	=====	.25	3	NOTE 2
3	6	18	BLU	2	3	P5 — N	.32	SOLDER	4	=====	.25	1	NOTE 2



DO NOT REDUCE

SCALE
6IN

CAUTION: OFF SHEET PARTS LIST EXISTS
SEE K-PL-7023689-0-DBP
(GH913A.)

FOR MANUFACTURING PURPOSES ONLY.

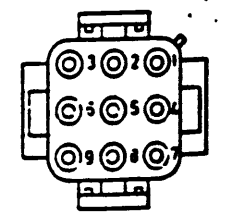
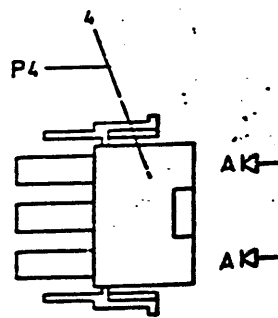
REV.	ECO NUMBER	DATE
A	INITIAL	7-17

DESCRIPTION	DRAWING NO.	PART NO.	ITEM NO.
UNLESS OTHERWISE SPECIFIED DIMENSIONS ARE IN INCHES AND THE FOLLOWING TOLERANCES APPLY (PER DEC STD 114)			
INCHES TOLERANCES	ANGLES ± 0° 30'	APPLICABLE DIMENSION RANGE (EACH ONE)	OVER 0.2 TO 0.25 ± .005
			OVER 0.25 TO 0.50 ± .005
SURFACE QUALITY	MICROINCHES	SURFACE QUALITY	OVER 0.50 TO 1.00 ± .010
			OVER 1.00 TO 1.50 ± .015
QUANTITY & VARIATION	THIRD ANGLE PROJECTION	DATE	TITLE
X = ± .1 XZ = ± .02 XXX = ± .008		L.H.S.O 1-21-86	digital
DO NOT SCALE DRAWING	REMOVE BURRS AND BREAK SHARP CORNERS	DATE	AC INPUT HARNESS
		1-21-86	
		1-22-86	
MATERIAL	FINISH	DATE	DOCUMENT NUMBER
SEE PARTS LIST	NONE	11/2/86	CIA 7023689-0-0
			REV A

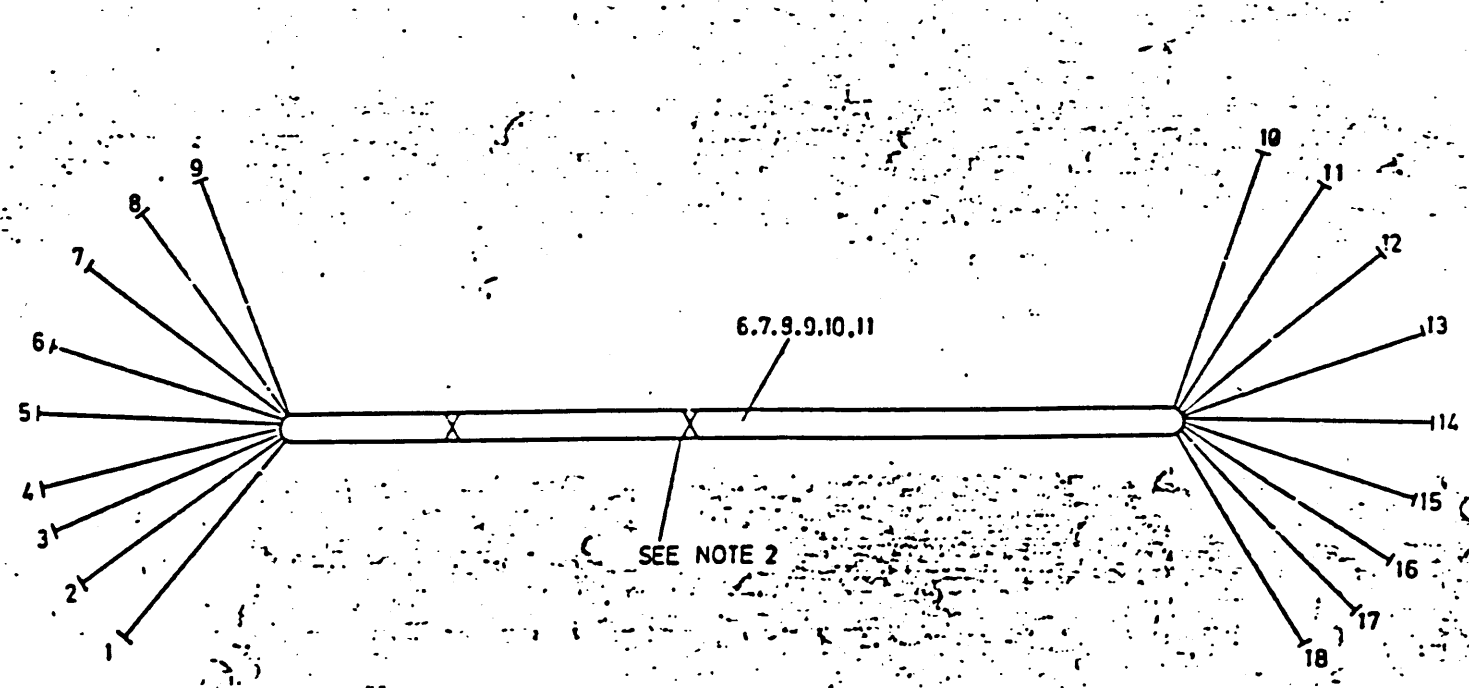
WIRE TABLE	WIRE NO.	ITEM NO.	DESCRIPTION	FROM			TO			REMARKS		
				AWG	COLOR	LENGTH	POINT	CONNECTION	STRIP WITH		POINT	CONNECTION
1	6	18	BLK	17	1	PL-1	.19	1	19		2	
2	5		BLK		2	PL-2		1	17		2	
3	6		BLK		3	PL-3		1	16		2	
4	9		YEL		4	PL-4		1	15		2	
5	8		RED		5	PL-5		1	14		2	
6	9		RED		6	PL-6		1	13		2	
7	7		BRN		7	PL-7		1	12		2	
8	11		WHT		8	PL-8		1	11		2	
9	10	18	GY	17	9	PL-9	.19	1	10		.22	2

LEGEND		
PART NO.	REV	VARIATION
7022657-01	A1	A5 SHOWN

NOTES:
 1. UNLESS OTHERWISE NOTED ALL LENGTHS ARE IN INCHES.
 2. USE TIE WRAPS (X) ITEM 5 AS SHOWN TO BE 4.3 INCHES FROM CONNECTOR.



VIEW A-A
SCALE 2/1



DO NOT REDUCE
 SCALE 6 IN 12 IN
 FOR MANUFACTURING PURPOSES ONLY

CAUTION: OFF SHEET PARTS LIST EXISTS
 SEE K-PL-7022657-0-DBP
 (G407A)

DESCRIPTION	DRAWING NO	PART NO	ITEM NO
UNLESS OTHERWISE SPECIFIED DIMENSIONS ARE IN INCHES AND THE FOLLOWING TOLERANCES APPLY (PER DEC STD 114)			
INCHES TOLERANCES	ANGLES ± 30'	DIMENSION RANGE IN INCHES	
XX ± .01	SURFACE QUALITY	OVER TO	OVER TO
XXX ± .005		0.25 TO 0.75	0.75 TO 1.25
QUANTITY & VARIATION	THIRD ANGLE PROJECTION	DATE 11-23-85	TITLE digital
	L.H. SO	DATE 11-21-85	HARNES. DC OUTPUT
	DO NOT SCALE DRAWING	DATE 11/20/85	
	REMOVE BLURRS AND BREAK SHARP CORNERS	DATE 11/21/85	
MATERIAL	SEE PARTS LIST	DATE 11/21/85	DOCUMENT NUMBER
FINISH NONE			D 7022657-0-0 A

DATE	INITIAL	DESCRIPTION
11/17		

DIA 7022657-0-0

EPD

7022360-0-0

WIRE TABLE

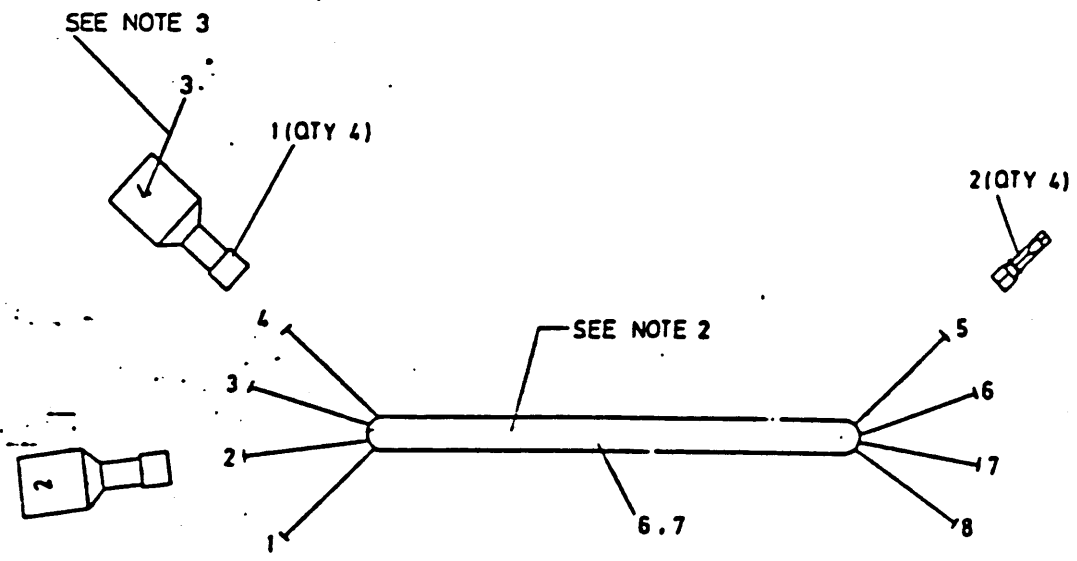
RUN NO.	ITEM NO.	DESCRIPTION			FROM				TO				REMARKS
		AWG	COLOR	LENGTH	POINT	CONNECTION	STRIP WITH	POINT	CONNECTION	STRIP WITH	POINT		
1	6	18	BRN	9"	1	=====	.25	1	8	=====	.22	2	
2	6	18	BRN	1"	2	=====		1	7	=====		2	
3	7	18	BLU	1"	3	=====		1	6	=====		2	
4	7	18	BLU	9"	4	=====	.25	1	5	=====	.22	2	

LEGEND

PART NO.	DESCRIPTION	VARIATION
7022360-0-0 A1		AS SHOWN

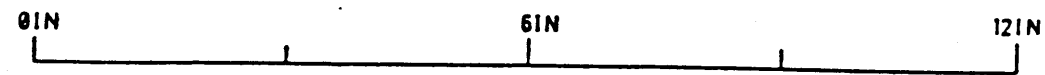
NOTES:

- UNLESS OTHERWISE NOTED ALL LENGTHS ARE IN INCHES.
- OUTER PVC TUBING ITEM # 4, AND INNER SHRINK TUBING ITEM # 5, ARE TO BE ASSEMBLED OVER LEADS 1, 2, 3 & 4 FROM BREAK OUT POINT TO BREAK OUT POINT. BOTH LENGTH 6 INCHES. DO NOT SHRINK.
- QUICK TERMINALS ITEM # 1 ARE TO BE LABELED USING MARKER ITEM # 3 WITH RESPECT TO THE RUN NUMBER.



CAUTION: OFF SHEET PARTS LIST EXISTS
SEE K-PL-7022360-0-DBP

DO NOT REDUCE
SCALE



FOR MANUFACTURING PURPOSES ONLY.

DESCRIPTION	DRAWING NO.	PART NO.	ITEM NO.
UNLESS OTHERWISE SPECIFIED DIMENSIONS ARE IN INCHES AND THE FOLLOWING TOLERANCES APPLY (PER DEC STD 114)			
INCHES TOLERANCES	ANGLES ± 30°	APPLICABLE DIMENSION RANGE	DIMENSION RANGE IN INCHES
± .1	SURFACE QUALITY	CHECK ONE	OVER 0.1 TO 0.2
± .05	✓	<input type="checkbox"/>	OVER 0.2 TO 0.5
± .02		<input type="checkbox"/>	OVER 0.5 TO 1.0
		<input type="checkbox"/>	OVER 1.0 TO 3.0
		<input type="checkbox"/>	OVER 3.0 TO 6.0
		<input type="checkbox"/>	OVER 6.0 TO 12.0
		<input type="checkbox"/>	OVER 12.0 TO 24.0
		<input type="checkbox"/>	OVER 24.0 TO 48.0
		<input type="checkbox"/>	OVER 48.0 TO 96.0
QUANTITY & VARIATION	THIRD ANGLE PROJECTION	DATE	TITLE
		H. Y. LI 11-19-84	CABLE, AC POWER SWITCH
DO NOT SCALE DRAWING	DATE	11/19/84	
REMOVE BURRS AND BREAK SHARP CORNERS	DATE	11/19/84	
MATERIAL	DATE	11/19/84	
SEE PARTS LIST	DATE	11-19-84	
FINISH NONE	DATE	11-19-84	
	TOP SHEET NO. D-1A-7022360-0-0		DOCUMENT NUMBER
			DIA 7022360-0-0 A
			SCALE M/N-
			1 BPOI

DATE
BY
INITIALS

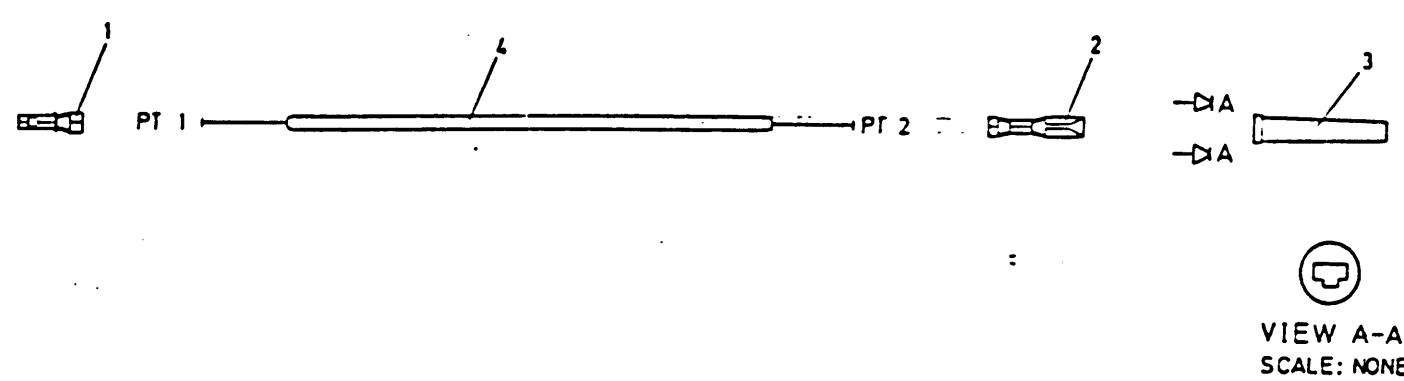
8 7 6 5 4 3 2 1

THIS DRAWING AND THE SPECIFICATIONS CONTAINED HEREIN ARE CONFIDENTIAL AND PROPRIETARY. THE Y AND THE PROPERTY OF DIGITAL EQUIPMENT CORPORATION AND SHALL NOT BE REPRODUCED OR TRANSMITTED IN ANY FORM OR BY ANY MEANS, ELECTRONIC OR MECHANICAL, INCLUDING PHOTOCOPYING, RECORDING, OR BY ANY INFORMATION STORAGE AND RETRIEVAL SYSTEM, WITHOUT THE EXPRESS WRITTEN PERMISSION OF DIGITAL EQUIPMENT CORPORATION. THIS IS AN UNCLASSIFIED DOCUMENT UNDER THE FEDERAL COPYRIGHT LAWS.

WIRE TABLE													
RUN NO.	ITEM NO.	DESCRIPTION			FROM				TO				REMARKS
		AWG	COLOR	LENGTH	POINT	CONNECTION	STRIP WIDTH	POINT	CONNECTION	STRIP WIDTH			
1	4	18	BLU	3	1	---	.22	2	2	3	.19	1	---

LEGEND		
PART NO.	REV.	VARIATION
7022361-3C1A1		AS SHOWN

NOTES:
1. UNLESS OTHERWISE NOTED ALL LENGTHS ARE IN INCHES.



CAUTION: OFF SHEET PARTS LIST EXISTS
SEE K-PL-7022361-0-DBP

DATE
BY
INITIALS

DESCRIPTION	DRAWING NO.	PART NO.	ITEM NO.
UNLESS OTHERWISE SPECIFIED DIMENSIONS ARE IN INCHES AND THE FOLLOWING TOLERANCES APPLY (PER DEC STD 114)			
INCHES TOLERANCES	ANGLES ± 30°	APPLICABLE DIMENSION RANGE	OVER 12.0
			OVER 12.0 TO 30.0
X ± .01 XX ± .02 XXX ± .03	SURFACE QUALITY	DIMENSION RANGE	OVER 12.0 TO 30.0
			OVER 30.0 TO 60.0
QUANTITY & VARIATION	✓	MICROINCHES	OVER 60.0 TO 120.0
THIRD ANGLE PROJECTION	DATE	TITLE	ITEM NO.
DO NOT SCALE DRAWING	H. Y. LI 11-22-84	JUMPER, VOLTAGE SELECTOR	1
REMOVE BURRS AND BREAK SHARP CORNERS	DATE		
MATERIAL	W. H. NG 11/20/84		
SEE PARTS LIST	DATE		
FINISH	W. H. NG 11-30-84		
NONE	DATE		
	D-1A-7022361-0-0		
		DOC. IDENT NUMBER	
		D 1A 7022361-0-0	
		REV	
		A	
		SCALE	
		NONE	

8 7 6 5 4 3 2 1 BPO1