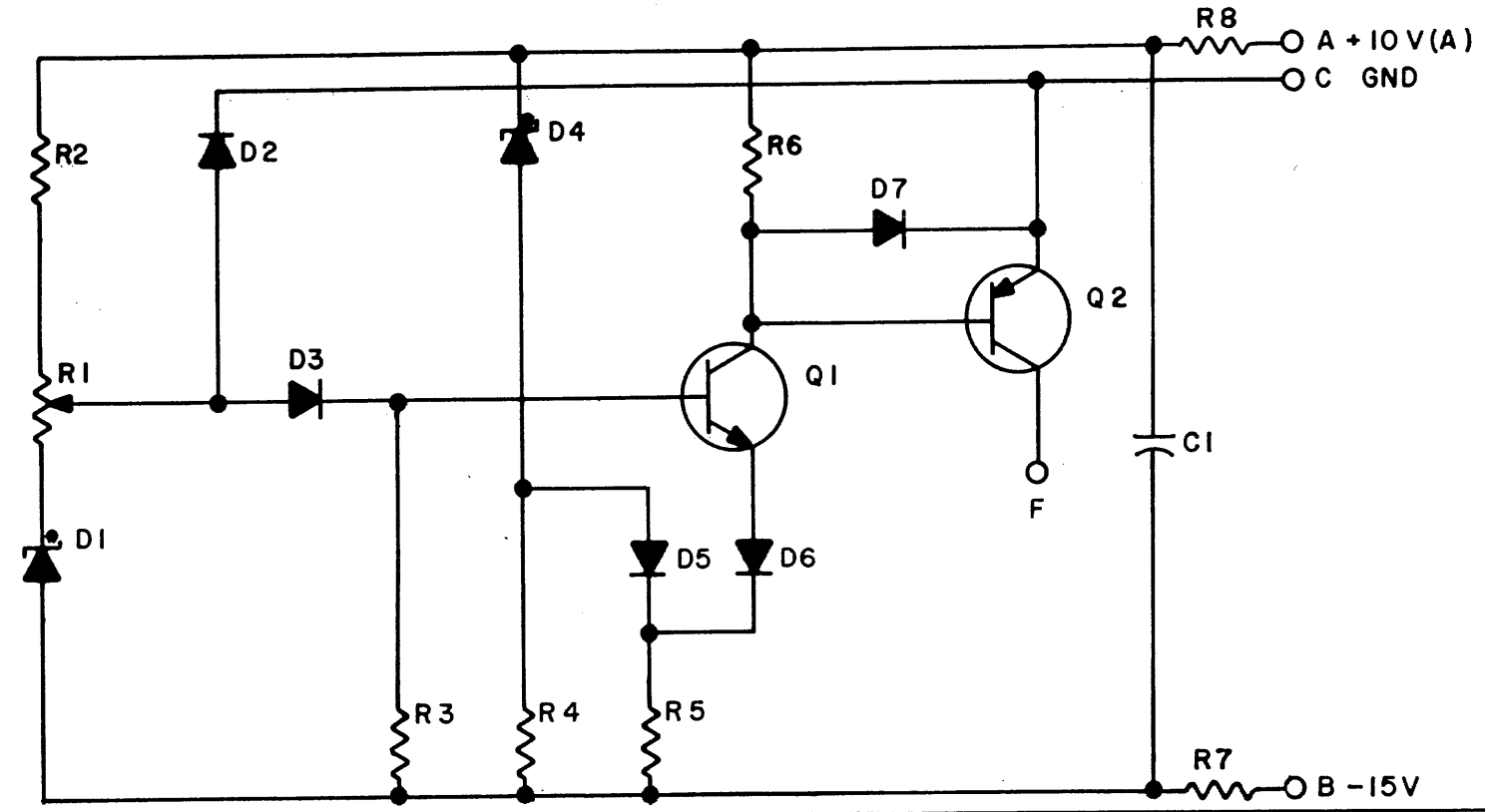


THIS SCHEMATIC IS FURNISHED ONLY FOR TEST AND MAINTENANCE PURPOSES. THE CIRCUITS ARE PROPRIETARY IN NATURE AND SHOULD BE TREATED ACCORDINGLY. COPYRIGHT 1965 BY DIGITAL EQUIPMENT CORPORATION



Q2	TRANSISTOR DEC2894-3B-S	1503099
Q1	TRANSISTOR DEC3009B	1503100
R7, R8	RES. 100 1/4W 5% CC	1300229
R6	RES. 3K 1/4W 5% CC	1300432
R5	RES. 1K 1/4W 5% CC	1300365
R4	RES. 6.8K 1/4W 10% CC	1300463
R3	RES. 68K 1/4W 10% CC	1300526
R2	RES. 3.9K 1/4W 5% CC	1300444
R1	RES. 5K PRINTED CKT. POT	1305451
D4	DIODE IN964A	1100127
D1	DIODE 1/4M 6.8 AZ5	1100102
D2, D3, D5, D6, D7	DIODE D664	1100114
C1	CAP. 0.1MFD 50V 20% D.CER.	1000030
	PARTS LIST	A-PL-W505-0-0
REFERENCE DESIGNATION	DESCRIPTION	PART NO.

*13V 10%

REVISIONS	CHK	CHG NO.	REV.
	REV. & REDR.	6571	A
		6993	B

DRN. I. HAHN	DATE 3-1-65
CHK'D N. PERRYMAN	DATE 3-3-65
ENG. N. BOISSE	DATE 3-3-65
PROD.	DATE

TRANSISTOR & DIODE CONVERSION CHART			
DEC	EIA	DEC	EIA
D664	IN3806		
IN964A *	SAME		
1/4M 6.8AZ5	IN4099		
DEC2894-3B	SAME		
DEC3009B	2N3009		

digital
EQUIPMENT CORPORATION
MAYNARD, MASSACHUSETTS

TITLE: **LOW VOLTAGE DETECTOR W505**

SIZE: B CODE: CS NUMBER: W505-0-1 REV. B

PRINTED CIRCUIT REV. B

DIST. 324 434 435²