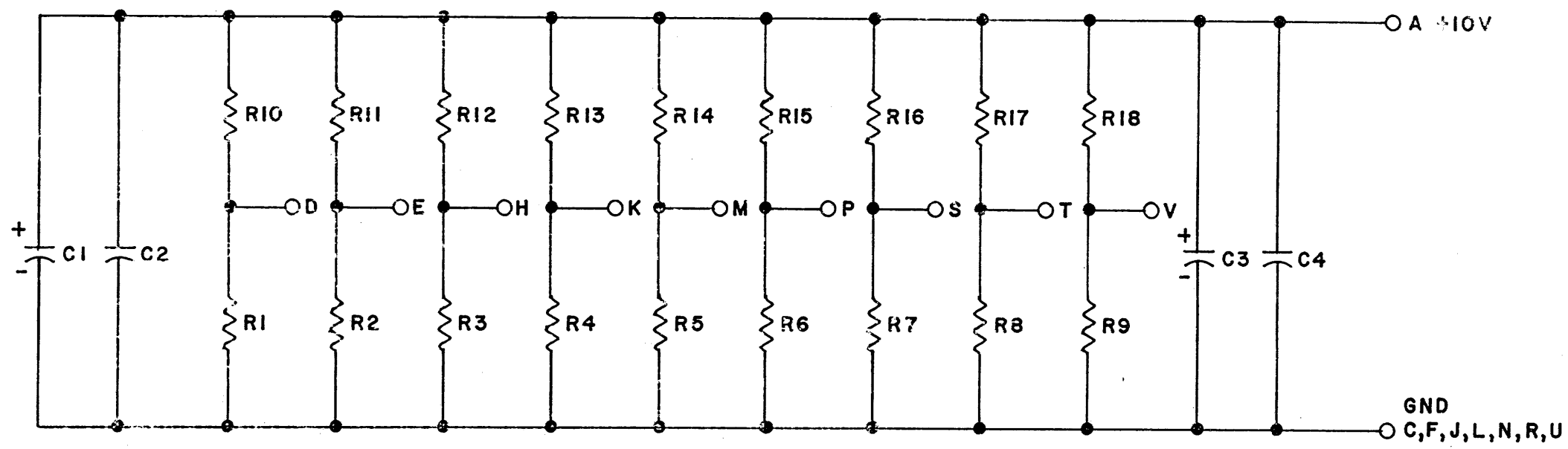


THIS SCHEMATIC IS FURNISHED ONLY FOR TEST AND MAINTENANCE PURPOSES. THE CIRCUITS ARE PROPRIETARY IN NATURE AND SHOULD BE TREATED ACCORDINGLY. COPYRIGHT 1968 BY DIGITAL EQUIPMENT CORPORATION



TEST PROCEDURE
 MEASURE VOLTAGE AT PINS D, E, H, K, M, P, S, T, V TO GND (+4V)

 < A B C D E F G H I J K L M N O P Q R S T U V W X Y Z >

R10 - R18	RES. 270 1/2W 5% CC	1300285
R1 - R9	RES. 180 1/4W 5% CC	1301322
C2, C4	CAP. .01MFD 100V 20% DISC	1001610
C1, C3	CAP. 3.9MFD 10V 10%	1000064
	PARTS LIST	A-PL-G715-0-0
REFERENCE DESIGNATION	DESCRIPTION	PART NO.

REVISIONS CHG NO. REV. 00001 A J. DREW 8-14-68	DRN. <i>M. Waller</i> DATE 8-12-68	TRANSISTOR & DIODE CONVERSION CHART DEC EIA DEC EIA		digital EQUIPMENT CORPORATION MAYNARD, MASSACHUSETTS	TITLE TERMINATOR G715	
	CHK'D <i>M. Miller</i> DATE 8-14-68	PROD. DATE	SIZE B		CODE CS	NUMBER G715-0-1